

Great North Road Solar and Biodiversity Park

Environmental Statement

Volume 4 - Technical Appendices

Technical Appendix A14.1 - Transport Statement - Part 7 of 9

Document Reference - EN010162/APP/6.4.14.1

Revision number 1

June 2025

Infrastructure Planning (Applications: Prescribed Forms and Procedure) Regulations 2009, APFP Regulation 5(2)(o)

**LOCATION PLAN
(NOT TO SCALE)**

Gipsey Lodge Farm

Lady Wood Farm

Egmont Common Farm

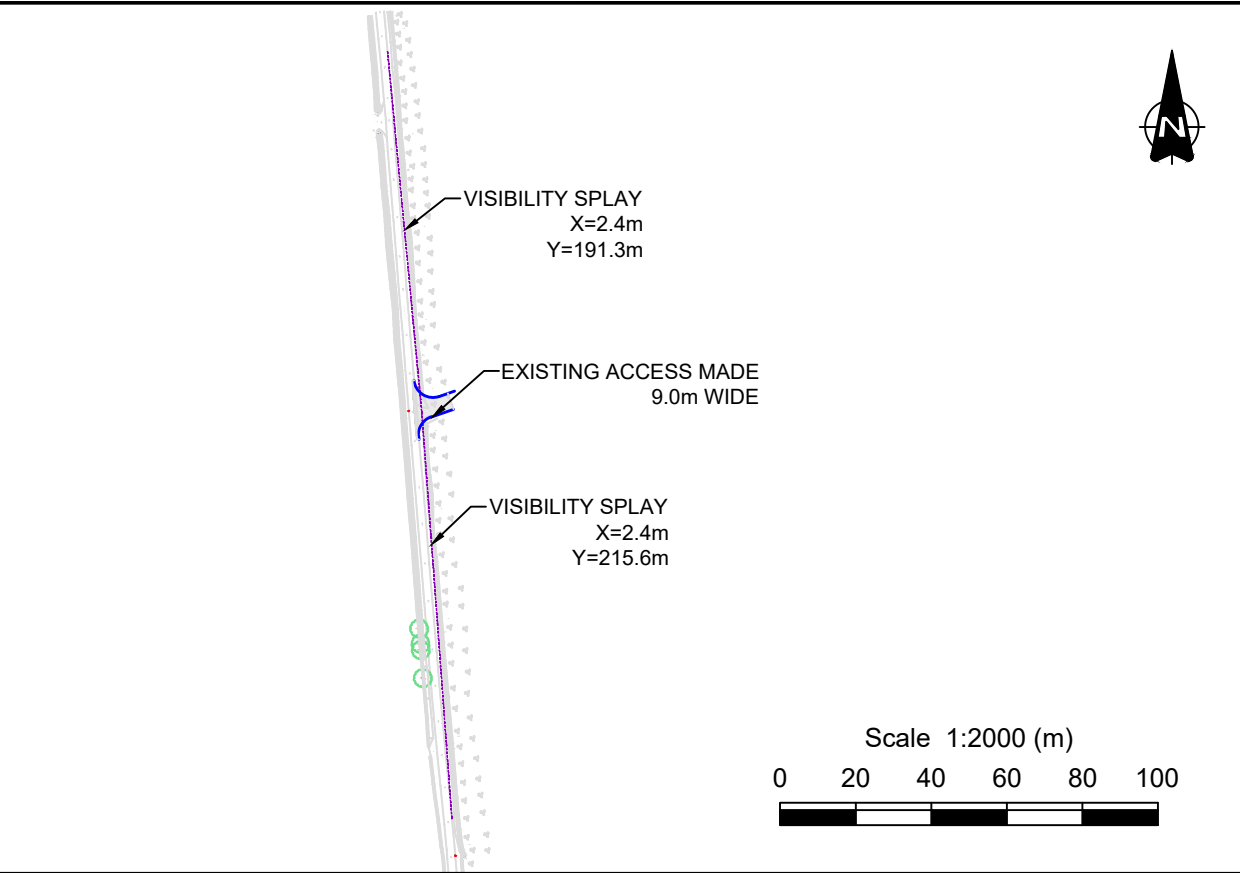
Moorhouse - Road

Breck Farm

Moorhouse

Easting	475159
Northing	367694

© OpenStreetMap contributors

[illegible]

- | | | |
|-------------|-------------|--|
| INFORMATION | 23D07-SK111 | |
|-------------|-------------|--|

SWEPT PATH ANALYSIS
SCALE 1:500

This diagram illustrates a swept path analysis for a vehicle maneuvering at a T-junction. The vehicle, labeled 'FT4 Design Motorised Vehicle (1980)', is shown in its initial position on the approach road. Four colored lines (blue, green, red, and brown) represent the swept paths of the vehicle's corners as it turns. The blue line shows the outermost path, while the red line shows the innermost path. The diagram also includes a north arrow pointing towards the top right and a scale of 1:500. The approach road has a width of 10.0m and a speed limit of 30. The junction is marked with a 'T' and a '30' speed limit sign. The receiving road has a width of 10.0m and a speed limit of 30. The diagram also shows the 'FT4 Design Motorised Vehicle (1980)' and its swept path analysis.

SITE ACCESS GEOMETRY
SCALE 1:250

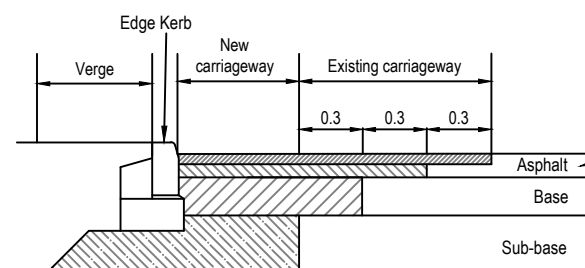
GH7 40.614
40.66
40.63
40.74
40.82
40.50
40.58
40.75
40.62
40.67
40.68
40.69
40.70
40.71
40.72
40.73
40.74
40.75
40.76
40.77
40.78
40.79
40.80
40.81
40.82
40.83
40.84
40.85
40.86
40.87
40.88
40.89
40.90
40.91
40.92
40.93
40.94
40.95
40.96
40.97
40.98
40.99
41.00
41.01
41.02
41.03
41.04
41.05
41.06
41.07
41.08
41.09
41.10
41.11
41.12
41.13
41.14
41.15
41.16
41.17
41.18
41.19
41.20
41.21
41.22
41.23
41.24
41.25
41.26
41.27
41.28
41.29
41.30
41.31
41.32
41.33
41.34
41.35
41.36
41.37
41.38
41.39
41.40
41.41
41.42
41.43
41.44
41.45
41.46
41.47
41.48
41.49
41.50
41.51
41.52
41.53
41.54
41.55
41.56
41.57
41.58
41.59
41.60
41.61
41.62
41.63
41.64
41.65
41.66
41.67
41.68
41.69
41.70
41.71
41.72
41.73
41.74
41.75
41.76
41.77
41.78
41.79
41.80
41.81
41.82
41.83
41.84
41.85
41.86
41.87
41.88
41.89
41.90
41.91
41.92
41.93
41.94
41.95
41.96
41.97
41.98
41.99
42.00
42.01
42.02
42.03
42.04
42.05
42.06
42.07
42.08
42.09
42.10
42.11
42.12
42.13
42.14
42.15
42.16
42.17
42.18
42.19
42.20
42.21
42.22
42.23
42.24
42.25
42.26
42.27
42.28
42.29
42.30
42.31
42.32
42.33
42.34
42.35
42.36
42.37
42.38
42.39
42.40
42.41
42.42
42.43
42.44
42.45
42.46
42.47
42.48
42.49
42.50
42.51
42.52
42.53
42.54
42.55
42.56
42.57
42.58
42.59
42.60
42.61
42.62
42.63
42.64
42.65
42.66
42.67
42.68
42.69
42.70
42.71
42.72
42.73
42.74
42.75
42.76
42.77
42.78
42.79
42.80
42.81
42.82
42.83
42.84
42.85
42.86
42.87
42.88
42.89
42.90
42.91
42.92
42.93
42.94
42.95
42.96
42.97
42.98
42.99
43.00
43.01
43.02
43.03
43.04
43.05
43.06
43.07
43.08
43.09
43.10
43.11
43.12
43.13
43.14
43.15
43.16
43.17
43.18
43.19
43.20
43.21
43.22
43.23
43.24
43.25
43.26
43.27
43.28
43.29
43.30
43.31
43.32
43.33
43.34
43.35
43.36
43.37
43.38
43.39
43.40
43.41
43.42
43.43
43.44
43.45
43.46
43.47
43.48
43.49
43.50
43.51
43.52
43.53
43.54
43.55
43.56
43.57
43.58
43.59
43.60
43.61
43.62
43.63
43.64
43.65
43.66
43.67
43.68
43.69
43.70
43.71
43.72
43.73
43.74
43.75
43.76
43.77
43.78
43.79
43.80
43.81
43.82
43.83
43.84
43.85
43.86
43.87
43.88
43.89
43.90
43.91
43.92
43.93
43.94
43.95
43.96
43.97
43.98
43.99
44.00
44.01
44.02
44.03
44.04
44.05
44.06
44.07
44.08
44.09
44.10
44.11
44.12
44.13
44.14
44.15
44.16
44.17
44.18
44.19
44.20
44.21
44.22
44.23
44.24
44.25
44.26
44.27
44.28
44.29
44.30
44.31
44.32
44.33
44.34
44.35
44.36
44.37
44.38
44.39
44.40
44.41
44.42
44.43
44.44
44.45
44.46
44.47
44.48
44.49
44.50
44.51
44.52
44.53
44.54
44.55
44.56
44.57
44.58
44.59
44.60
44.61
44.62
44.63
44.64
44.65
44.66
44.67
44.68
44.69
44.70
44.71
44.72
44.73
44.74
44.75
44.76
44.77
44.78
44.79
44.80
44.81
44.82
44.83
44.84
44.85
44.86
44.87
44.88
44.89
44.90
44.91
44.92
44.93
44.94
44.95
44.96
44.97
44.98
44.99
45.00
45.01
45.02
45.03
45.04
45.05
45.06
45.07
45.08
45.09
45.10
45.11
45.12
45.13
45.14
45.15
45.16
45.17
45.18
45.19
45.20
45.21
45.22
45.23
45.24
45.25
45.26
45.27
45.28
45.29
45.30
45.31
45.32
45.33
45.34
45.35
45.36
45.37
45.38
45.39
45.40
45.41
45.42
45.43
45.44
45.45
45.46
45.47
45.48
45.49
45.50
45.51
45.52
45.53
45.54
45.55
45.56
45.57
45.58
45.59
45.60
45.61
45.62
45.63
45.64
45.65
45.66
45.67
45.68
45.69
45.70
45.71
45.72
45.73
45.74
45.75
45.76
45.77
45.78
45.79
45.80
45.81
45.82
45.83
45.84
45.85
45.86
45.87
45.88
45.89
45.90
45.91
45.92
45.93
45.94
45.95
45.96
45.97
45.98
45.99
46.00
46.01
46.02
46.03
46.04
46.05
46.06
46.07
46.08
46.09
46.10
46.11
46.12
46.13
46.14
46.15
46.16
46.17
46.18
46.19
46

CROSS-SECTIONAL STEPPED JOINT BETWEEN NEW AND EXISTING CARRIAGEWAY

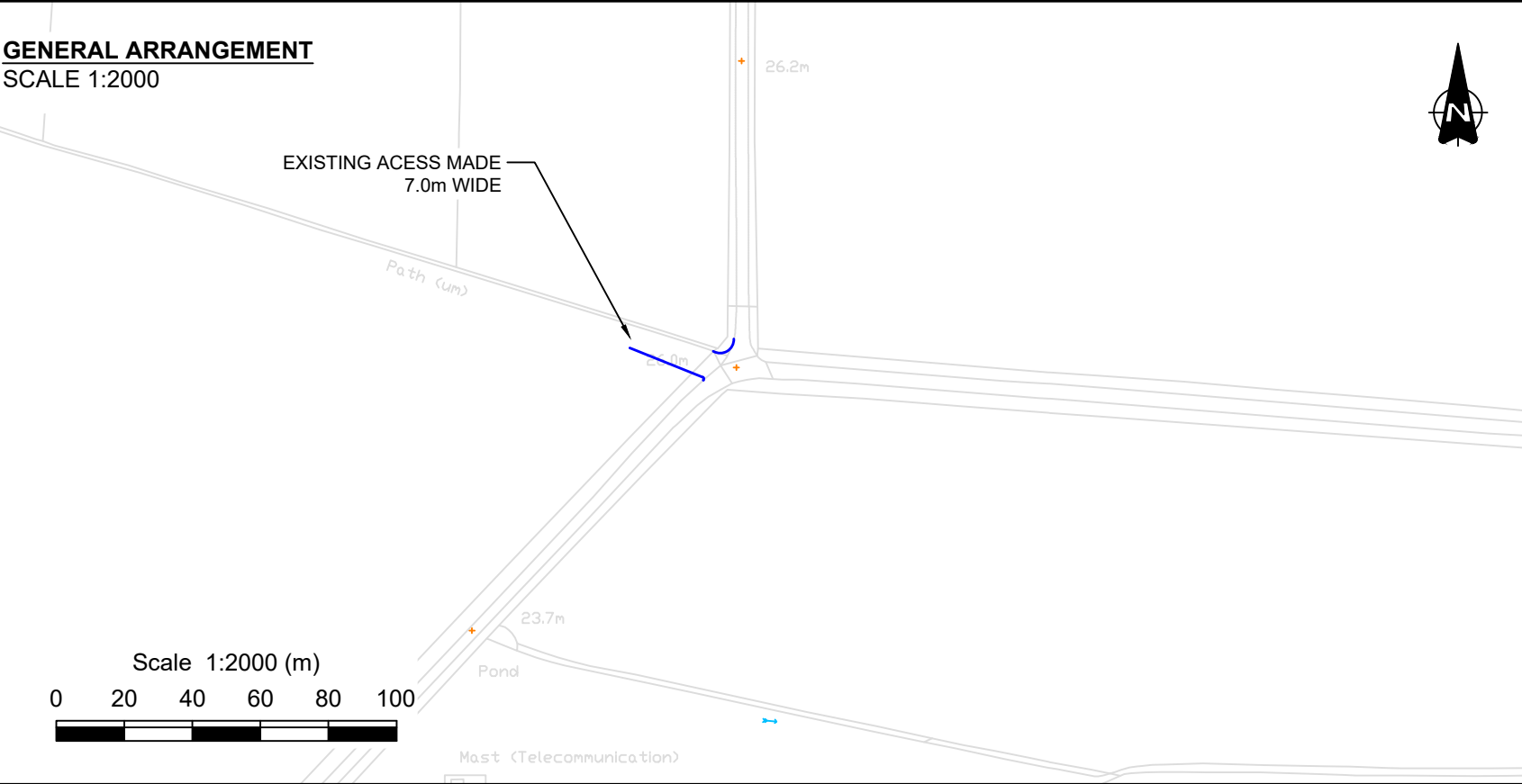
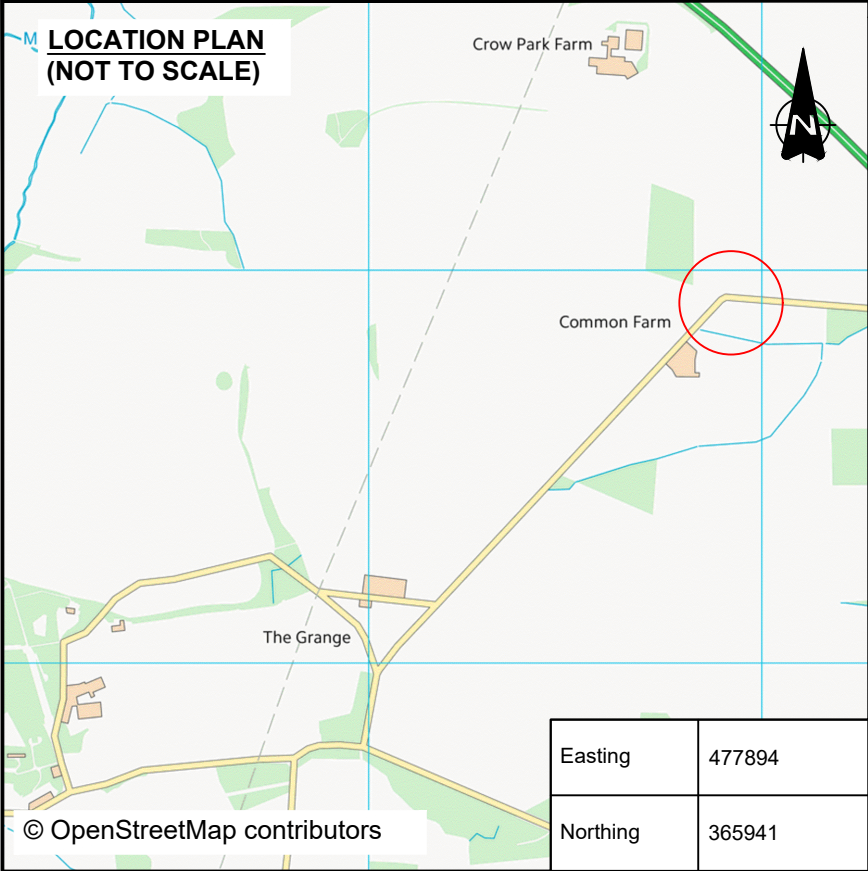
The diagram illustrates a cross-section of a road where a new carriageway is being constructed adjacent to an existing one. On the left, a 'Verge' is shown. Next to it is the 'Edge Kerb'. The 'New carriageway' is the area between the kerb and the start of the 'Existing carriageway'. The 'Existing carriageway' is shown with three distinct steps, each with a width of 0.3 units. Below the surface layers, the 'Base' and 'Sub-base' are indicated. An arrow points from the text 'EXISTING CARRIAGEWAY CONSTRUCTION CUT BACK TO CREATE STEPS - DEPTH OF WHICH SHALL NOT BE LESS THAN DEPTH OF THE NEW SURFACING.' to the steps in the existing carriageway.

Labels in the diagram include: Verge, Edge Kerb, New carriageway, Existing carriageway, 0.3, 0.3, 0.3, Asphalt, Base, Sub-base.

EXISTING CARRIAGEWAY CONSTRUCTION CUT BACK TO CREATE STEPS - DEPTH OF WHICH SHALL NOT BE LESS THAN DEPTH OF THE NEW SURFACING.



EXISTING CARRIAGEWAY
CONSTRUCTION CUT BACK TO CREATE
STEPS - DEPTH OF WHICH SHALL NOT
BE LESS THAN DEPTH OF THE NEW
SURFACING.



NOTES

- Do not scale from this drawing.
- All dimensions are in metres unless otherwise stated.
- This drawing is for planning purposes only.

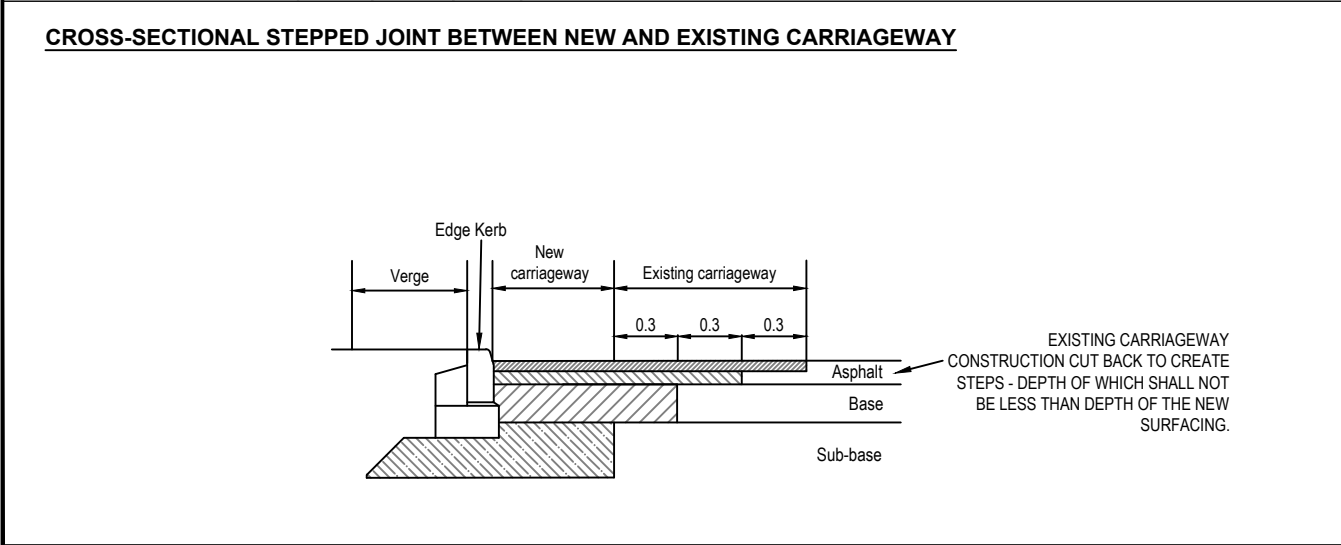
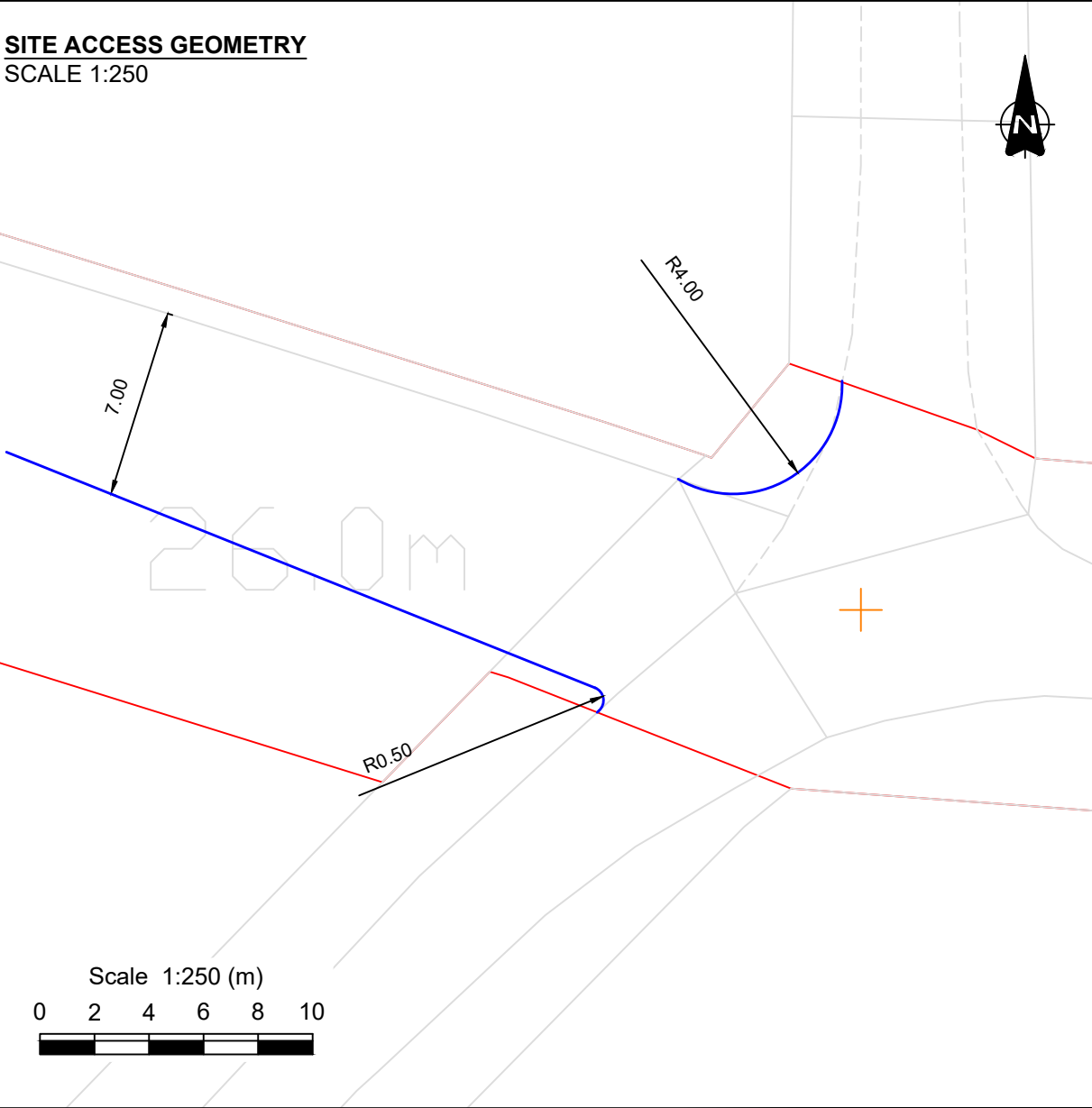
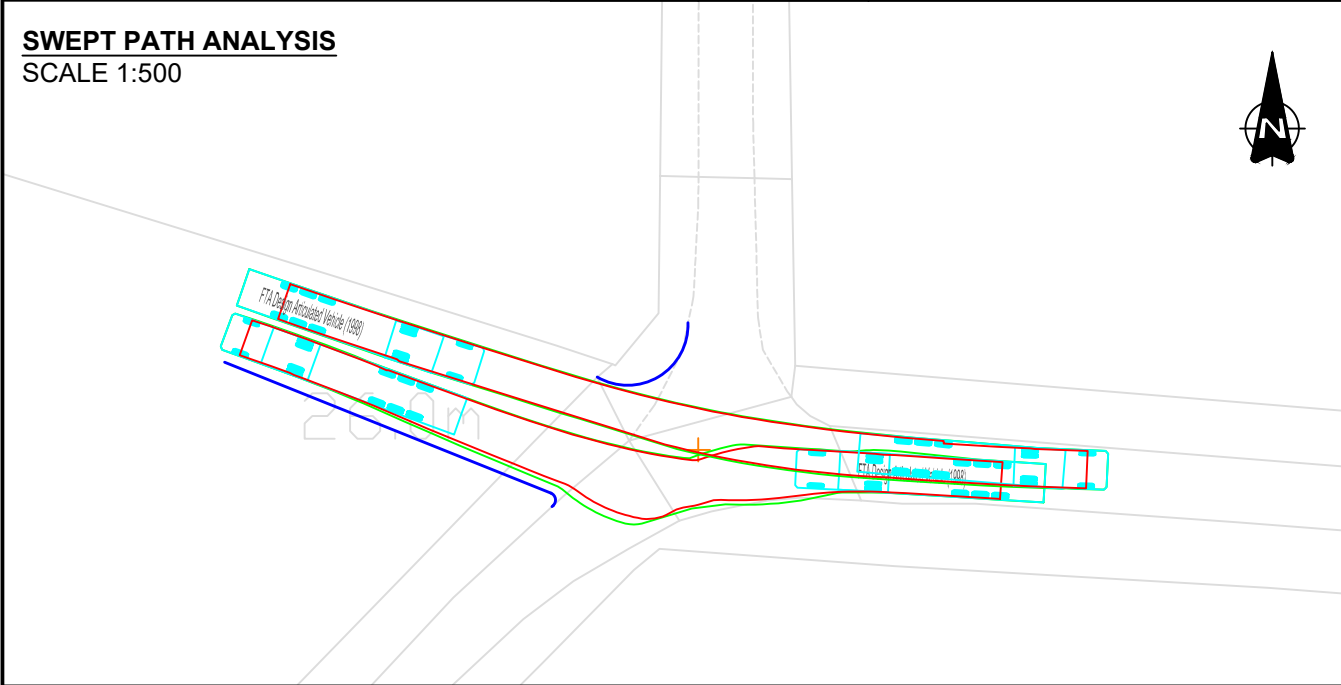
KEY

- Proposed Kerbline
- Order Limits

OS MasterMap: Reproduced from Ordnance Survey digital map data © Crown Copyright 2023. All rights reserved. Licence number 100066882.

VEHICLES USED FOR SWEEP PATHS

FTA Design Articulated Vehicle (1998)
Overall Length 16.480m
Overall Width 2.550m
Overall Body Height 3.870m
Min Body Ground Clearance 0.515m
Max Track Width 2.470m



Rev.	Date	Revision details	Drawn	Checked	Approved

© This drawing is the property of SYSTRA Limited and the information can only be reproduced with their prior permission.

SYSTRA

Milburn House,
Dean Street,
Newcastle upon Tyne,
NE1 1LE

T 0191 249 3816
E uk_newcastle@systra.com

Client

ELEMENTS GREEN TRENT LTD.

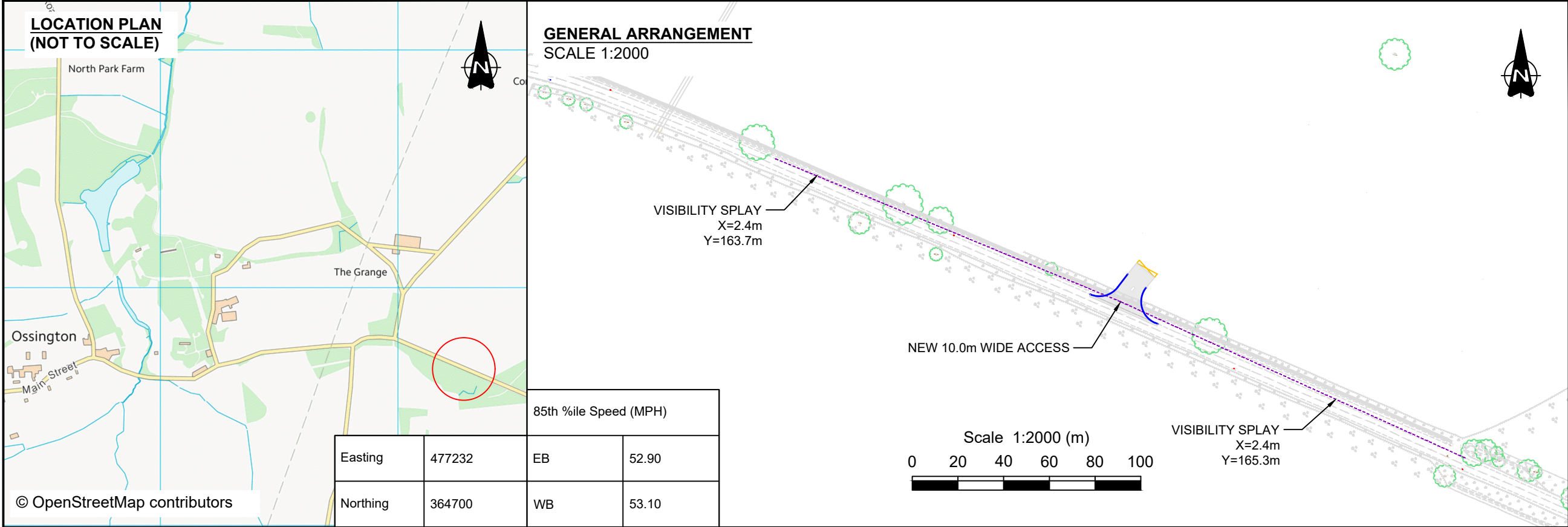
Project

GREAT NORTH ROAD SOLAR FARM
AND BIODIVERSITY PARK

Title

PROPOSED SITE ACCESS
PA13

Drawn	FW	Checked	JH	Approved	SE
Original dwg. size	A3	Date	16.05.25	Scale	AS INDICATED
Drawing Status	INFORMATION	Drawing Number	23D07-SK112	Rev.	



NOTES

1. Do not scale from this drawing.

2. All dimensions are in metres unless otherwise stated.

3. This drawing is for planning purposes only.

KEY

Proposed Kerbline

Visibility splay (DMRB)

Order Limits

Proposed road construction

OS MasterMap: Reproduced from Ordnance Survey digital map data © Crown Copyright 2023. All rights reserved. Licence number 100066882.

SWEPT PATH ANALYSIS
SCALE 1:500

SITE ACCESS GEOMETRY
SCALE 1:250

VEHICLES USED FOR SWEEP PATHS

FTA Design Articulated Vehicle (1998)

Overall Length 16.480m

Overall Width 2.550m

Overall Body Height 3.870m

Min Body Ground Clearance 0.515m

Max Track Width 2.470m

Rev

Date

Revision details

Drawn

Checked

Approved

© This drawing is the property of SYSTRA Limited and the information can only be reproduced with their prior permission.

SYSTRA

Milburn House,
Dean Street,
Newcastle upon Tyne,
NE1 1LE

T 0191 249 3816
E uk_newcastle@sysstra.com

Client

ELEMENTS GREEN TRENT LTD.

Project

GREAT NORTH ROAD SOLAR FARM
AND BIODIVERSITY PARK

Title

PROPOSED SITE ACCESS
PA14

Drawn

FW

Checked

JH

Approved

SE

Original dwg. size

A3

Date

16.05.25

Scale

AS INDICATED

Drawing Status

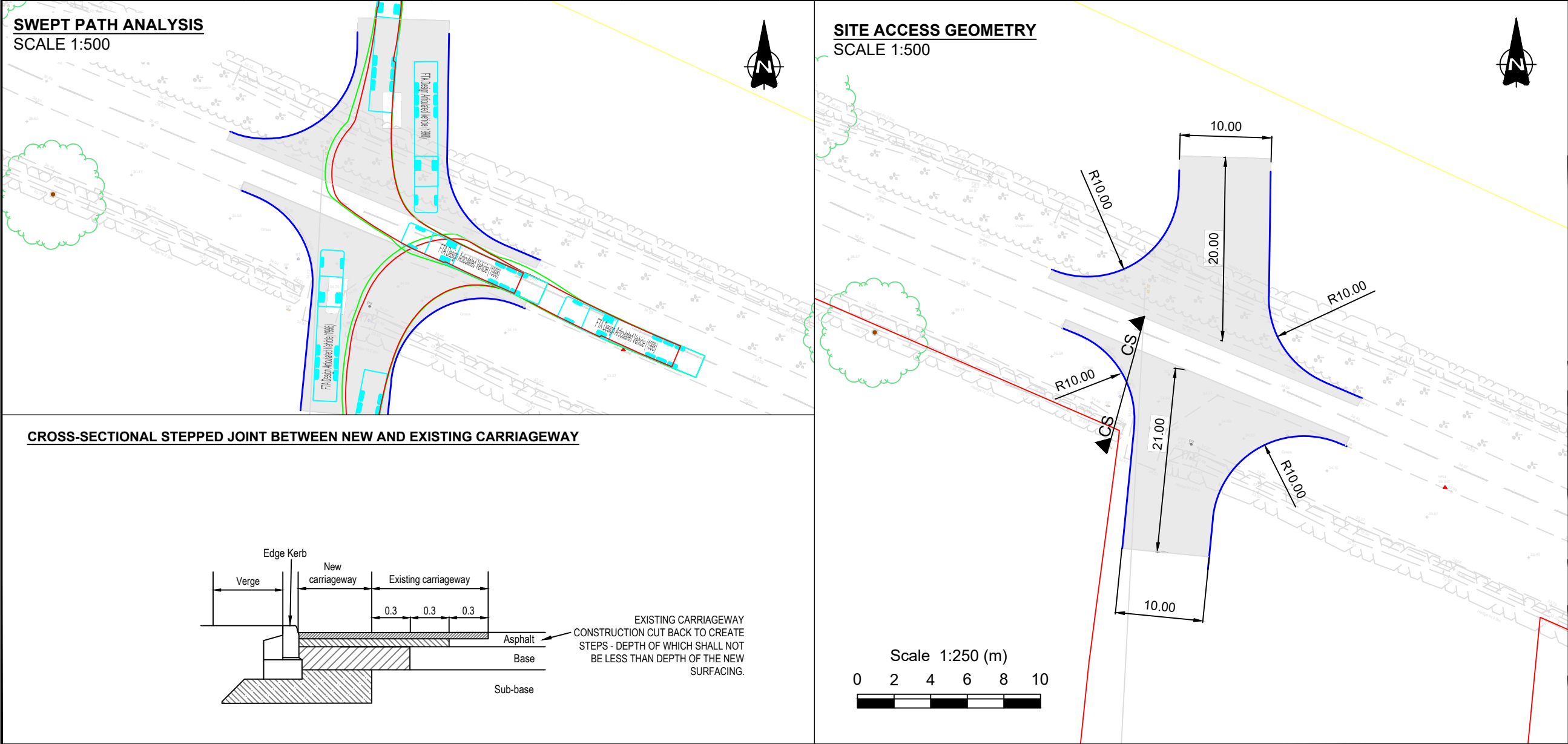
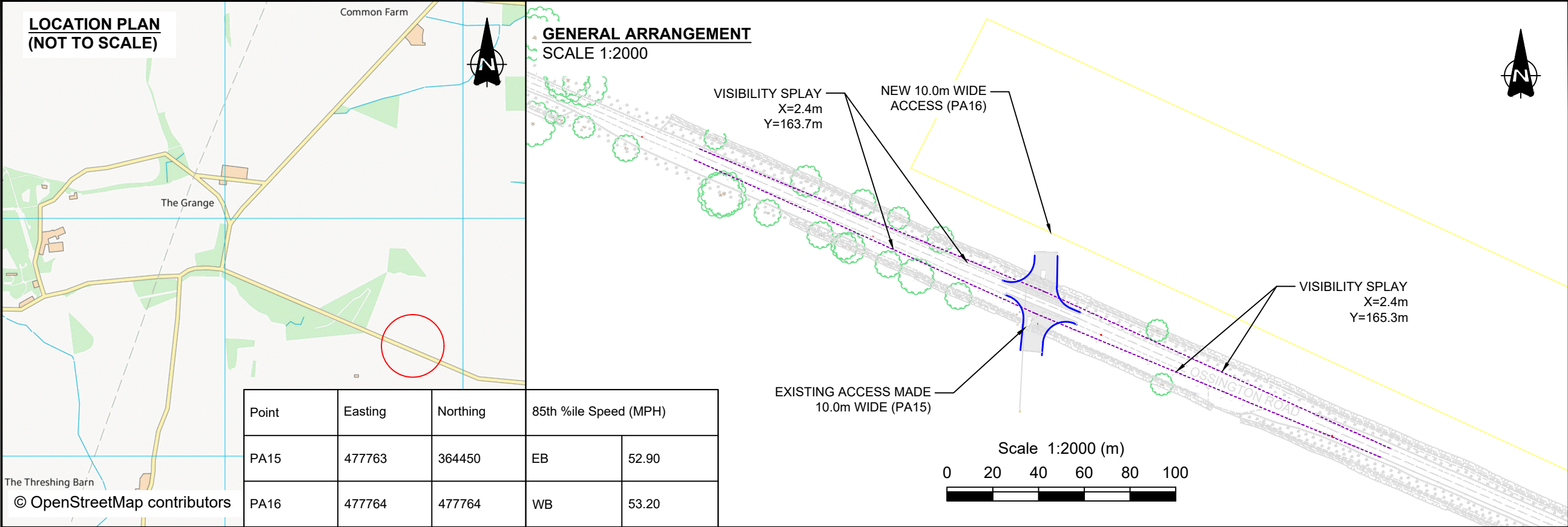
INFORMATION

Drawing Number

23D07-SK113

Rev.

CROSS-SECTIONAL STEPPED JOINT BETWEEN NEW AND EXISTING CARRIAGEWAY



NOTES

1. Do not scale from this drawing.

2. All dimensions are in metres unless otherwise stated.

3. This drawing is for planning purposes only.

KEY

Proposed Kerbline

Visibility splay (DMRB)

Order Limits

Proposed road construction

OS MasterMap: Reproduced from Ordnance Survey digital map data © Crown Copyright 2023. All rights reserved. Licence number 100066882.

VEHICLES USED FOR SWEEP PATHS

FTA Design Articulated Vehicle (1998)

Overall Length 16.480m

Overall Width 2.550m

Overall Body Height 3.870m

Min Body Ground Clearance 0.515m

Max Track Width 2.470m

Rev.	Date	Revision details	Drawn	Checked	Approved

© This drawing is the property of SYSTRA Limited and the information can only be reproduced with their prior permission.

SYSTRA

Milburn House,
Dean Street,
Newcastle upon Tyne,
NE1 1LE

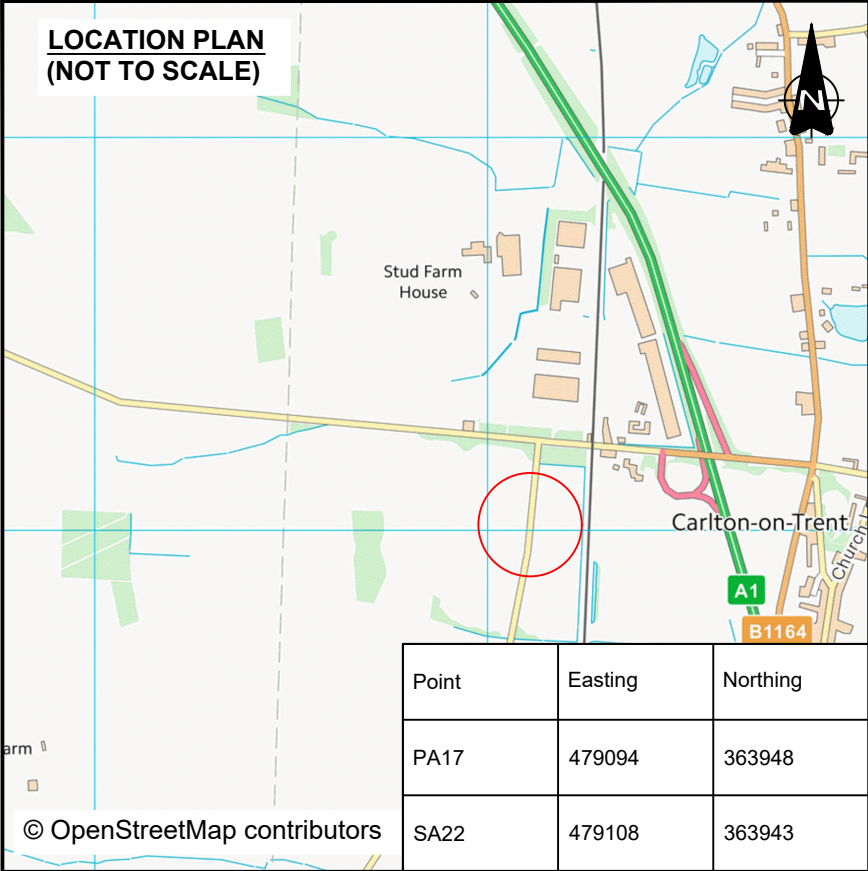
T 0191 249 3816
E uk_newcastle@systra.com

Client
ELEMENTS GREEN TRENT LTD.

Project
GREAT NORTH ROAD SOLAR FARM
AND BIODIVERSITY PARK

Title
PROPOSED SITE ACCESS
PA15 & PA16

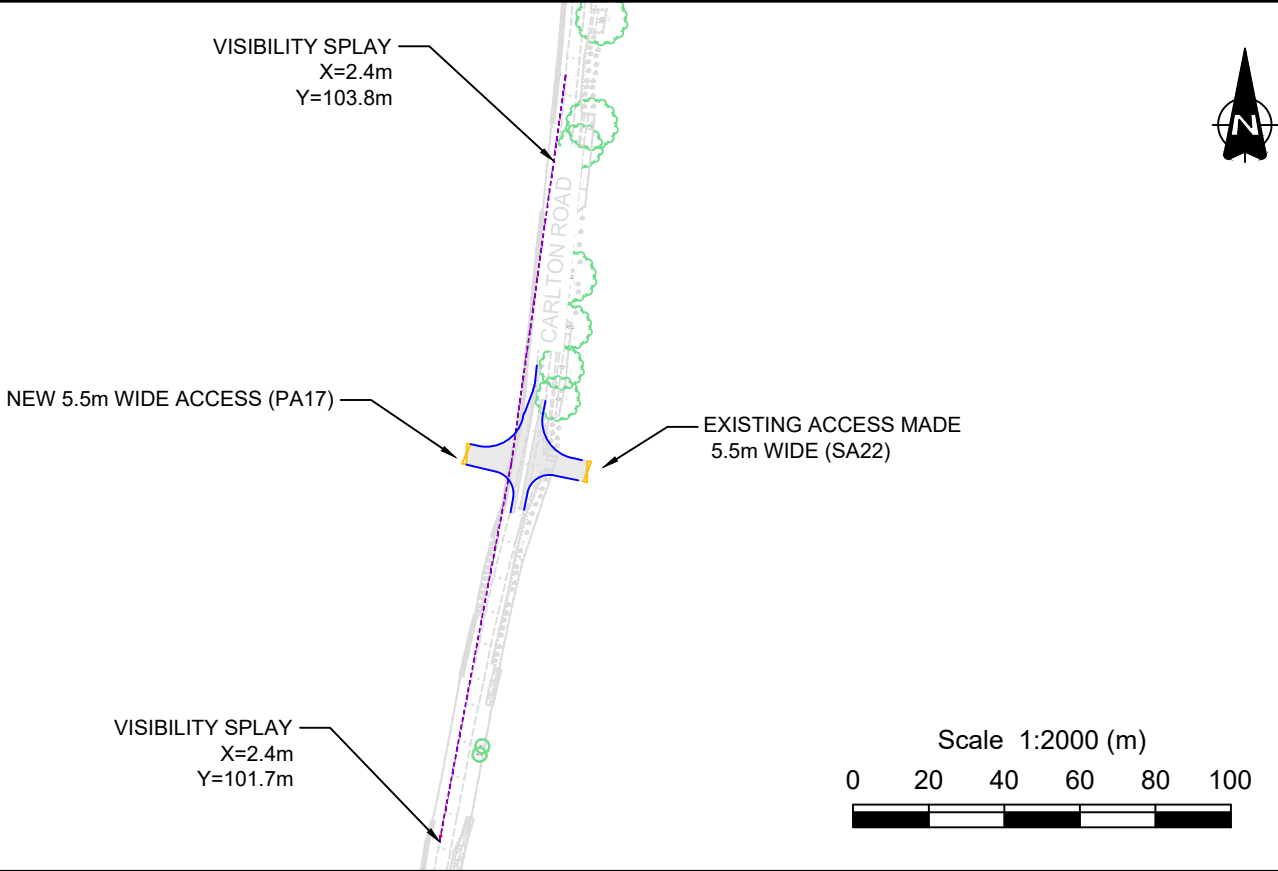
Drawn	FW	Checked	JH	Approved	SE
Original dwg. size	A3	Date	16.05.25	Scale	AS INDICATED
Drawing Status	INFORMATION	Drawing Number	23D07-SK114	Rev.	



© OpenStreetMap contributors

Point	Easting	Northing	85th %ile Speed (MPH)	
PA17	479094	363948	NB	39.60
SA22	479108	363943	SB	40.10

GENERAL ARRANGEMENT
SCALE 1:2000

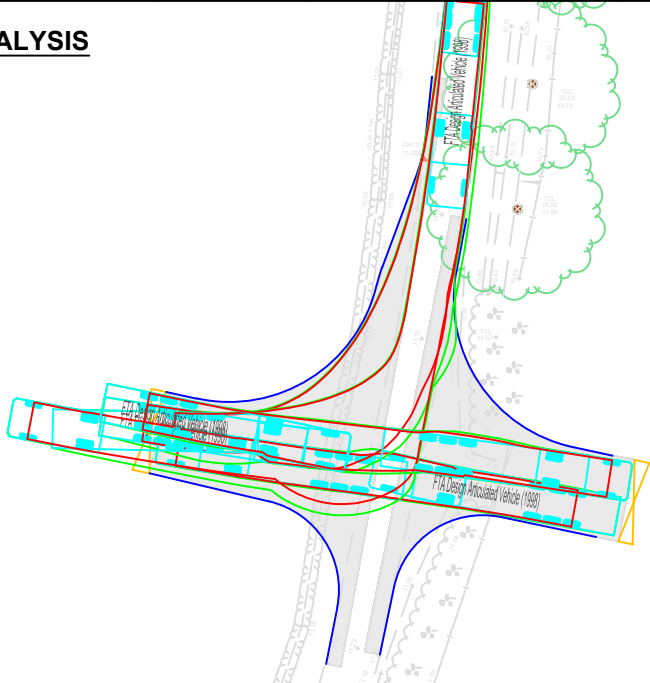


- NOTES**
- Do not scale from this drawing.
 - All dimensions are in metres unless otherwise stated.
 - This drawing is for planning purposes only.

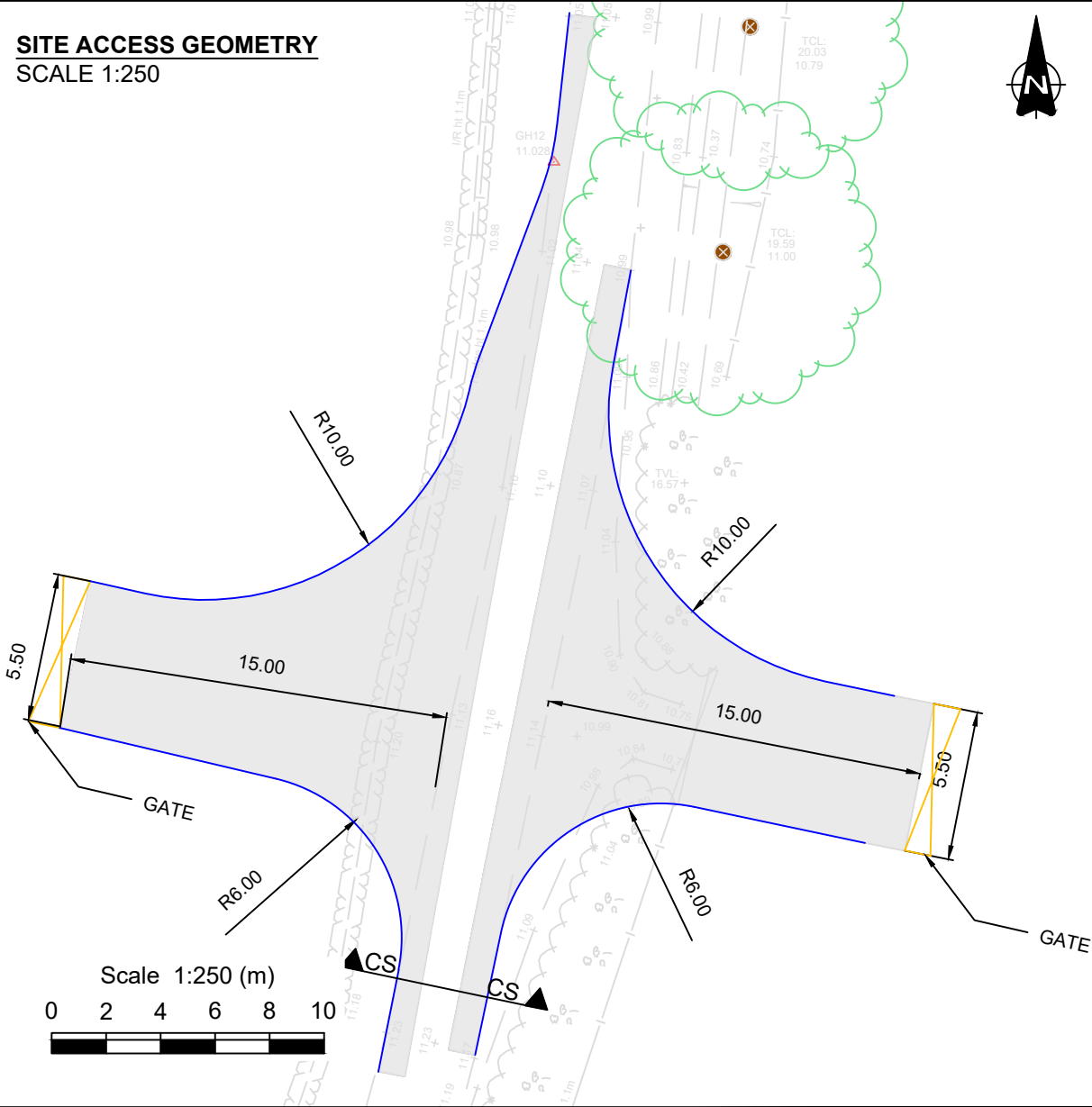
- KEY**
- Proposed Kerbline
 - Visibility splay (DMRB)
 - Proposed road construction

OS MasterMap: Reproduced from Ordnance Survey digital map data © Crown Copyright 2023. All rights reserved. Licence number 100066882.

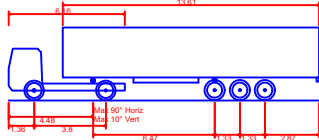
SWEPT PATH ANALYSIS
SCALE 1:500



SITE ACCESS GEOMETRY
SCALE 1:250

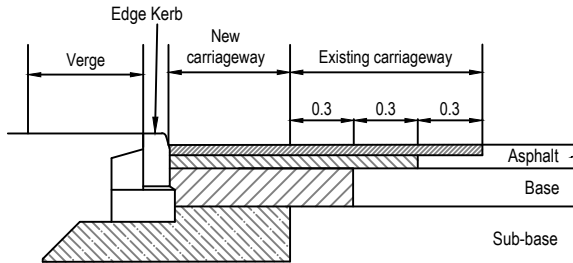


VEHICLES USED FOR SWEEP PATHS

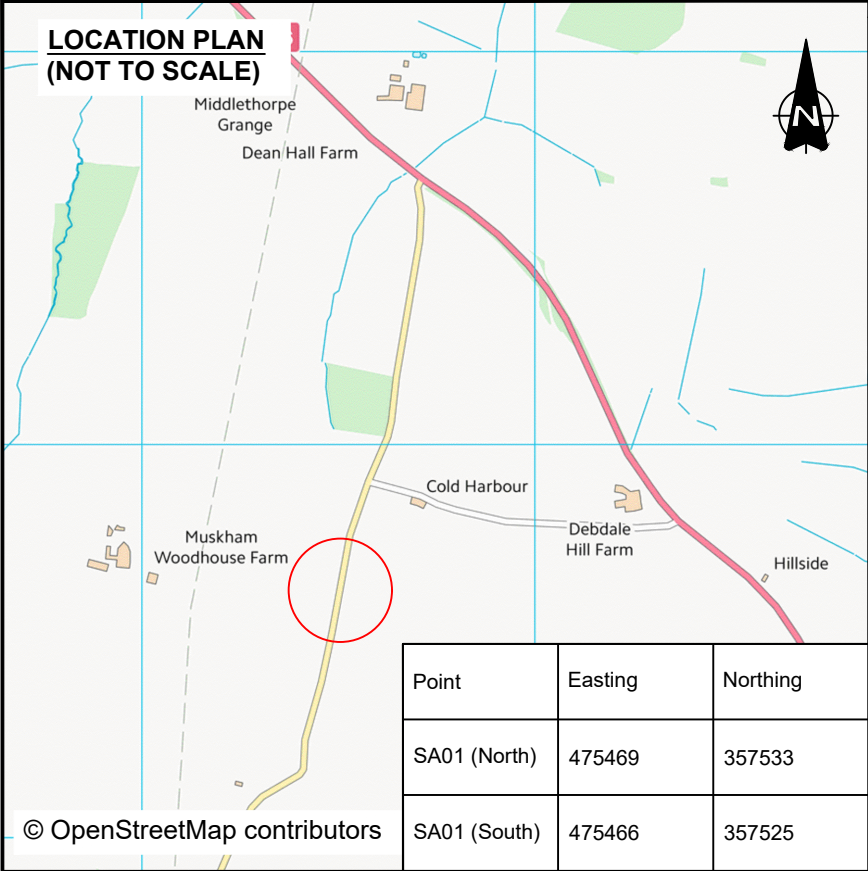


FTA Design Articulated Vehicle (1998)
Overall Length 16.480m
Overall Width 2.550m
Overall Body Height 3.870m
Min Body Ground Clearance 0.515m
Max Track Width 2.470m

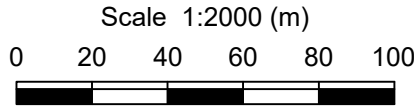
CROSS-SECTIONAL STEPPED JOINT BETWEEN NEW AND EXISTING CARRIAGEWAY



EXISTING CARRIAGEWAY CONSTRUCTION CUT BACK TO CREATE STEPS - DEPTH OF WHICH SHALL NOT BE LESS THAN DEPTH OF THE NEW SURFACING.



**GENERAL ARRANGEMENT
SCALE 1:2000**



NOTES

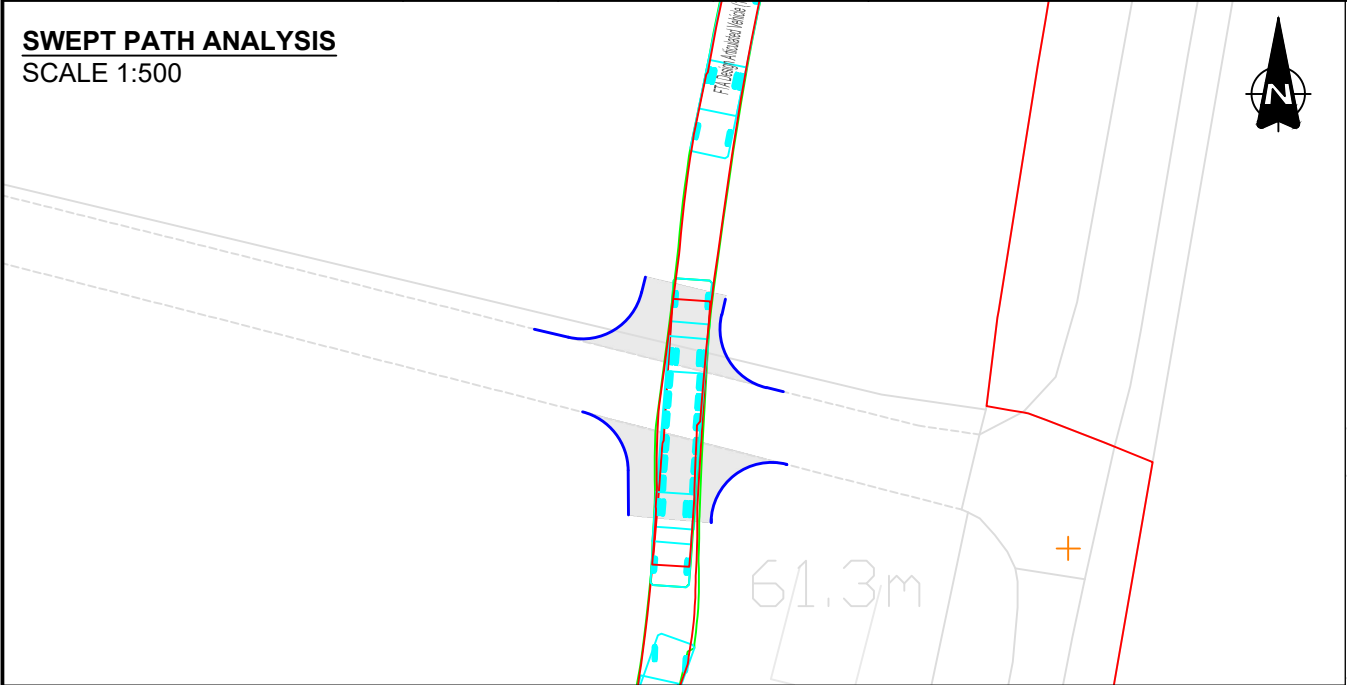
- Do not scale from this drawing.
- All dimensions are in metres unless otherwise stated.
- This drawing is for planning purposes only.

KEY

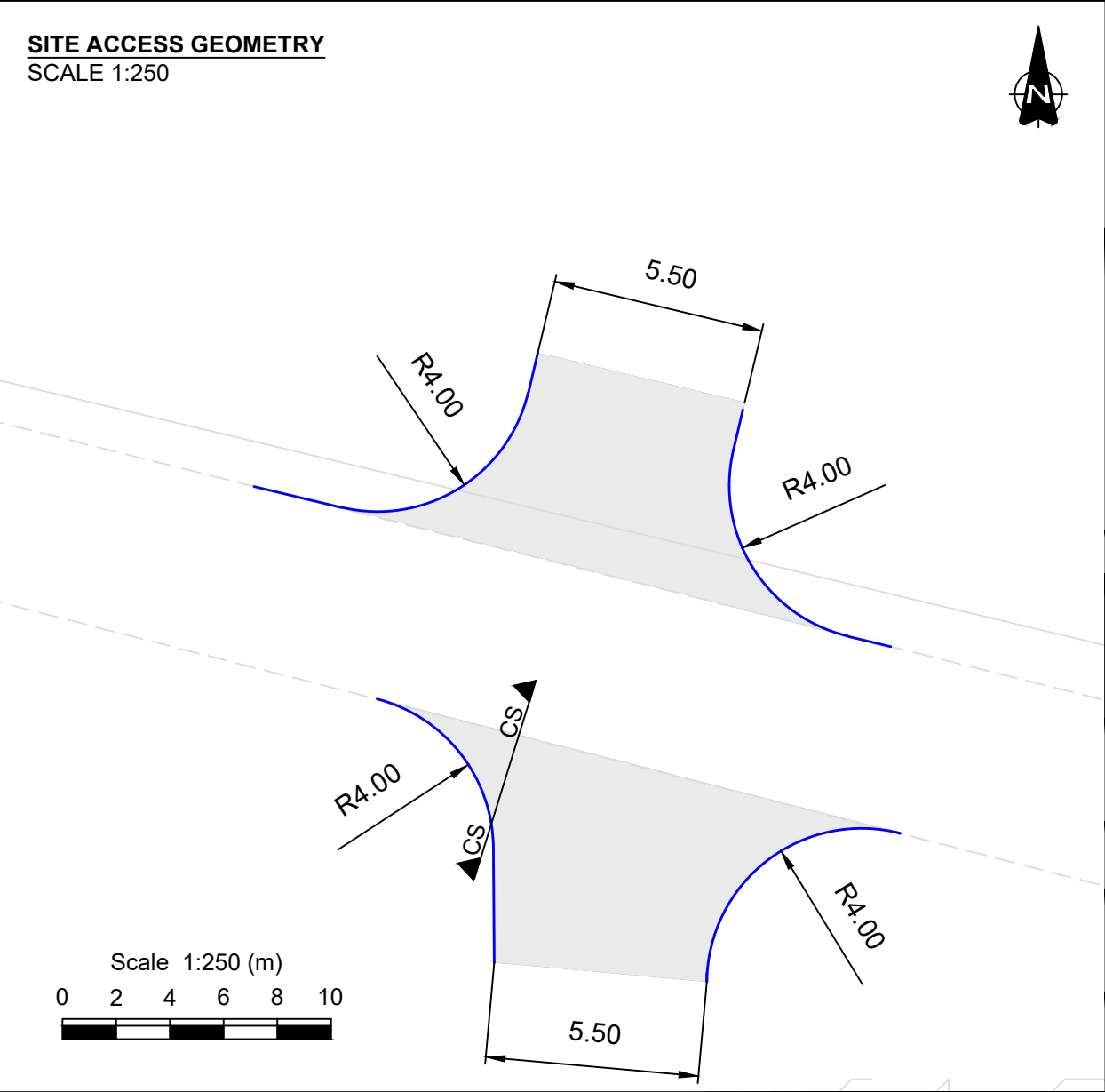
- Proposed Kerbline
- Order Limits
- Proposed road construction

OS MasterMap: Reproduced from Ordnance Survey digital map data © Crown Copyright 2023. All rights reserved. Licence number 100066882.

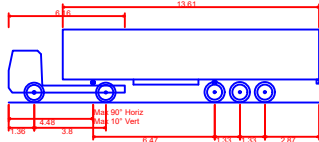
**SWEPT PATH ANALYSIS
SCALE 1:500**



**SITE ACCESS GEOMETRY
SCALE 1:250**

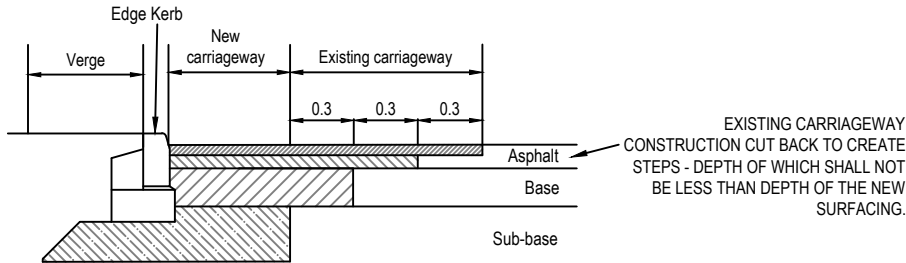


VEHICLES USED FOR SWEEP PATHS

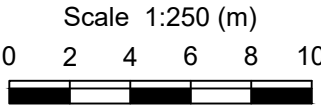


FTA Design Articulated Vehicle (1998)
Overall Length 16.480m
Overall Width 2.550m
Overall Body Height 3.870m
Min Body Ground Clearance 0.515m
Max Track Width 2.470m

CROSS-SECTIONAL STEPPED JOINT BETWEEN NEW AND EXISTING CARRIAGEWAY



EXISTING CARRIAGEWAY CONSTRUCTION CUT BACK TO CREATE STEPS - DEPTH OF WHICH SHALL NOT BE LESS THAN DEPTH OF THE NEW SURFACING.



Rev.	Date	Revision details	Drawn	Checked	Approved

© This drawing is the property of SYSTRA Limited and the information can only be reproduced with their prior permission.



Milburn House,
Dean Street,
Newcastle upon Tyne,
NE1 1LE

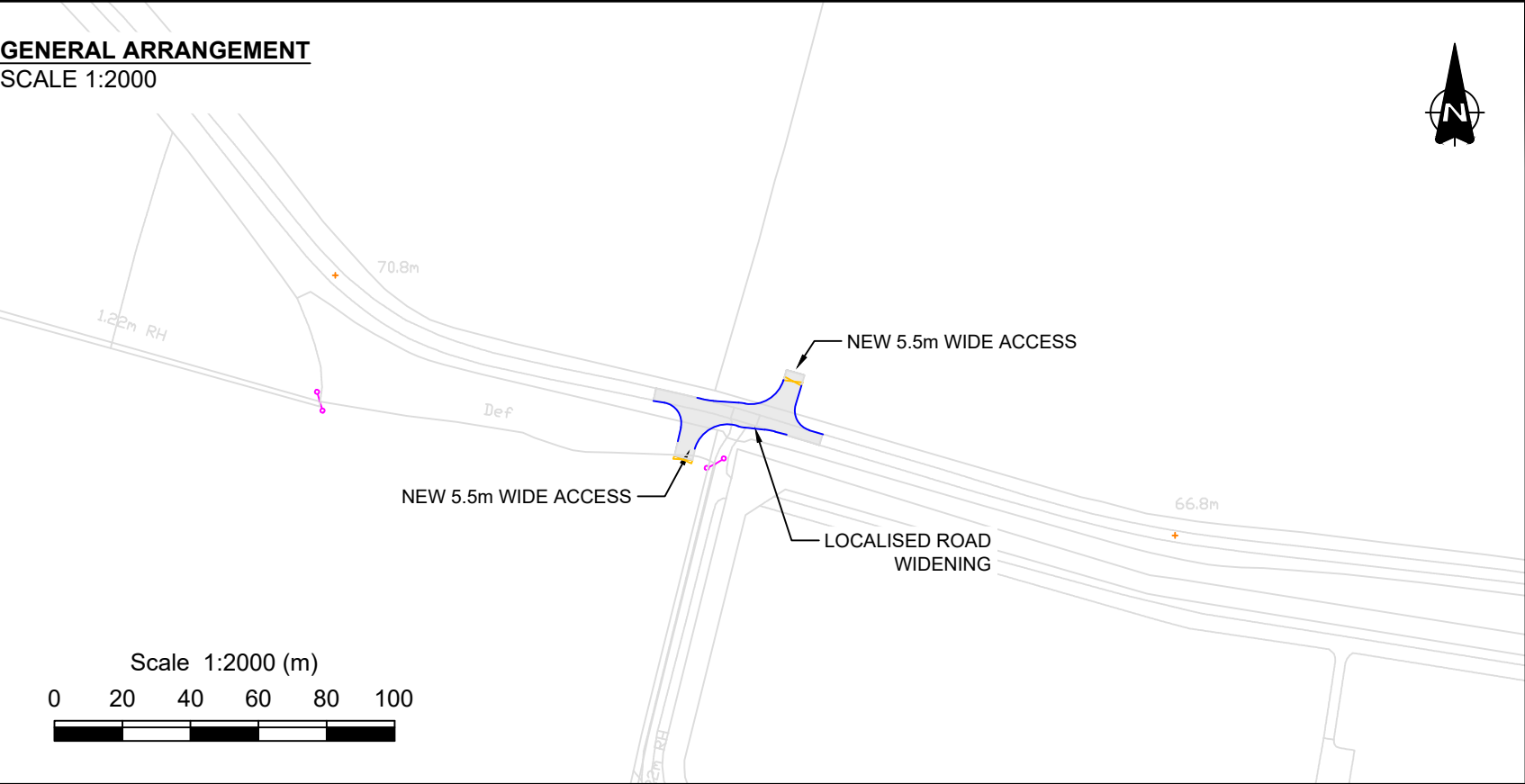
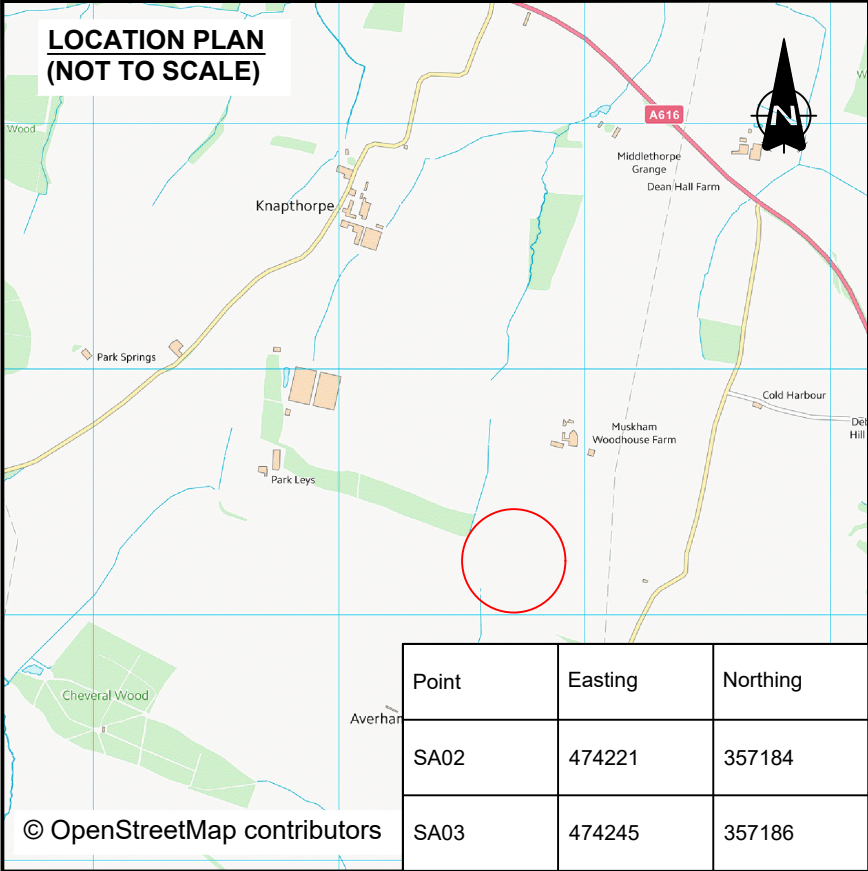
T 0191 249 3816
E uk_newcastle@systra.com

Client
ELEMENTS GREEN TRENT LTD.

Project
GREAT NORTH ROAD SOLAR FARM
AND BIODIVERSITY PARK

Title
PROPOSED SITE ACCESS
SA01

Drawn FW	Checked JH	Approved SE
Original dwg. size A3	Date 16.05.25	Scale AS INDICATED
Drawing Status INFORMATION	Drawing Number 23D07-SK116	Rev.



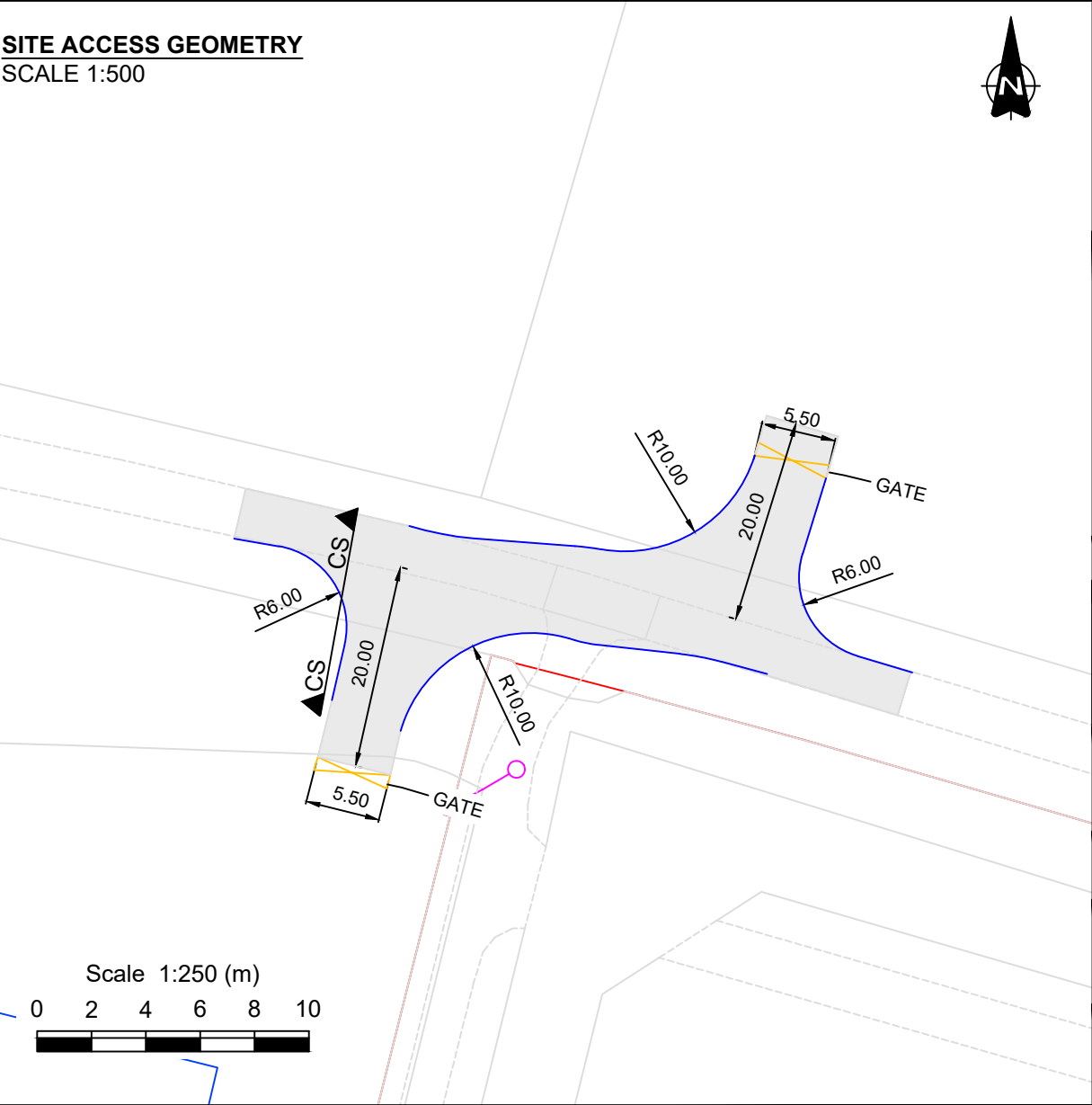
NOTES

- Do not scale from this drawing.
- All dimensions are in metres unless otherwise stated.
- This drawing is for planning purposes only.

KEY

- Proposed Kerbline
- Order Limits
- Proposed road construction

OS MasterMap: Reproduced from Ordnance Survey digital map data © Crown Copyright 2023. All rights reserved. Licence number 100066882.



VEHICLES USED FOR SWEEP PATHS

FTA Design Articulated Vehicle (1998)

Overall Length	16.480m
Overall Width	2.550m
Overall Body Height	3.870m
Min Body Ground Clearance	0.515m
Max Track Width	2.470m

Rev.	Date	Revision details	Drawn	Checked	Approved

© This drawing is the property of SYSTRA Limited and the information can only be reproduced with their prior permission.

SYSTRA

Milburn House,
Dean Street,
Newcastle upon Tyne,
NE1 1LE

T 0191 249 3816
E uk_newcastle@systra.com

Client

ELEMENTS GREEN TRENT LTD.

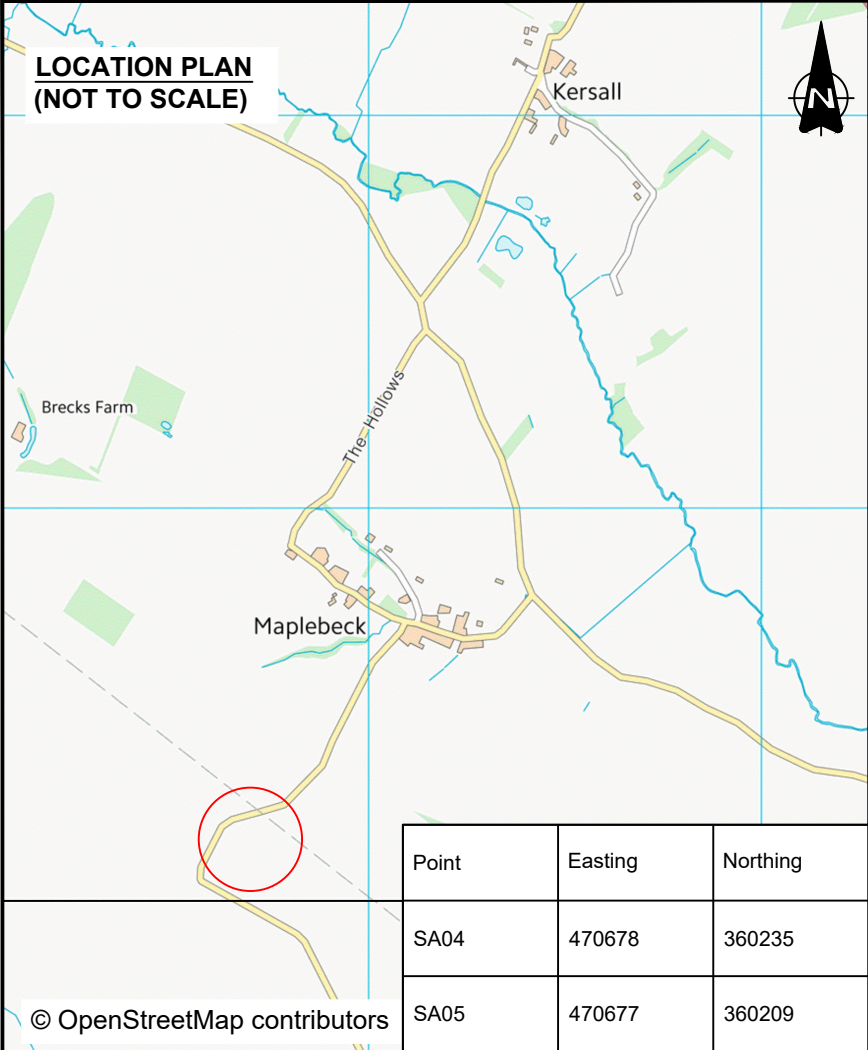
Project

GREAT NORTH ROAD SOLAR FARM
AND BIODIVERSITY PARK

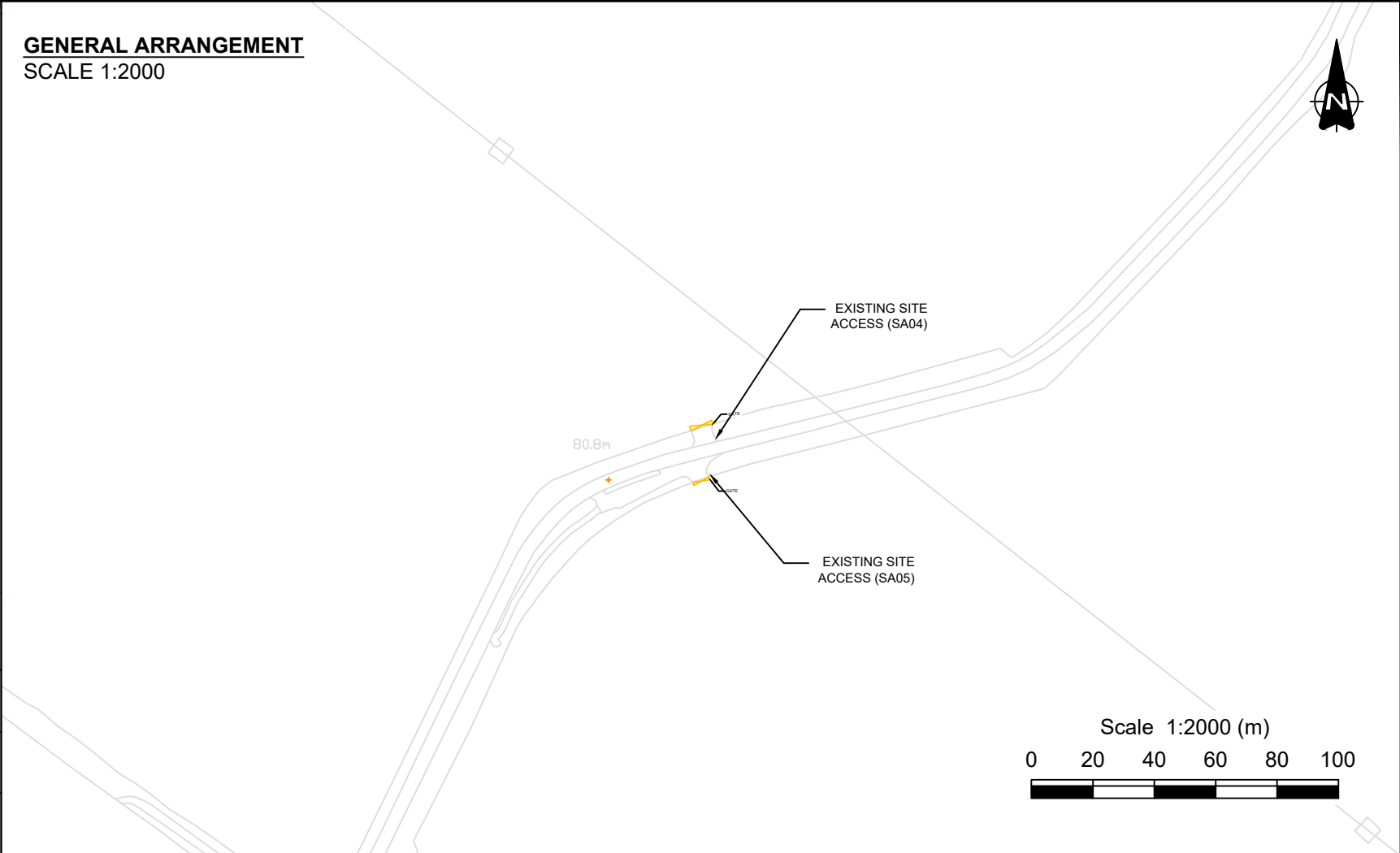
Title

PROPOSED SITE ACCESS
SA02 & SA03

Drawn	FW	Checked	JH	Approved	SE
Original dwg. size	A3	Date	16.05.25	Scale	AS INDICATED
Drawing Status	INFORMATION	Drawing Number	23D07-SK117	Rev.	



**GENERAL ARRANGEMENT
SCALE 1:2000**



NOTES

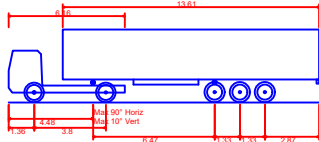
1. Do not scale from this drawing.
2. All dimensions are in metres unless otherwise stated.
3. This drawing is for planning purposes only.

KEY

- Proposed Kerblines
- Order Limits

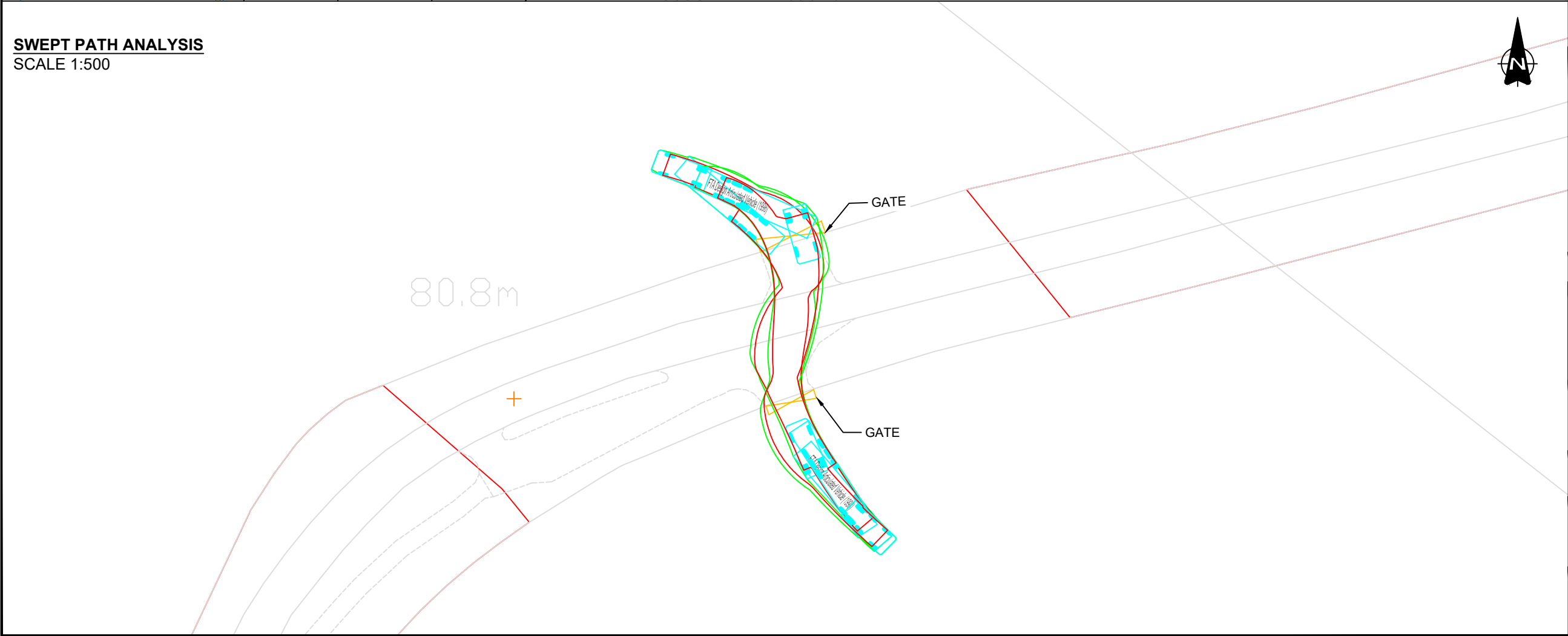
OS MasterMap: Reproduced from Ordnance Survey digital map data © Crown Copyright 2023. All rights reserved. Licence number 100066882.

VEHICLES USED FOR SWEEP PATHS



FTA Design Articulated Vehicle (1998)
Overall Length 16.480m
Overall Width 2.550m
Overall Body Height 3.870m
Min Body Ground Clearance 0.515m
Max Track Width 2.470m

**SWEPT PATH ANALYSIS
SCALE 1:500**



Rev.	Date	Revision details	Drawn	Checked	Approved

© This drawing is the property of SYSTRA Limited and the information can only be reproduced with their prior permission.



Milburn House,
Dean Street,
Newcastle upon Tyne,
NE1 1LE

T 0191 249 3816
E uk_newcastle@systra.com

Client
ELEMENTS GREEN TRENT LTD.

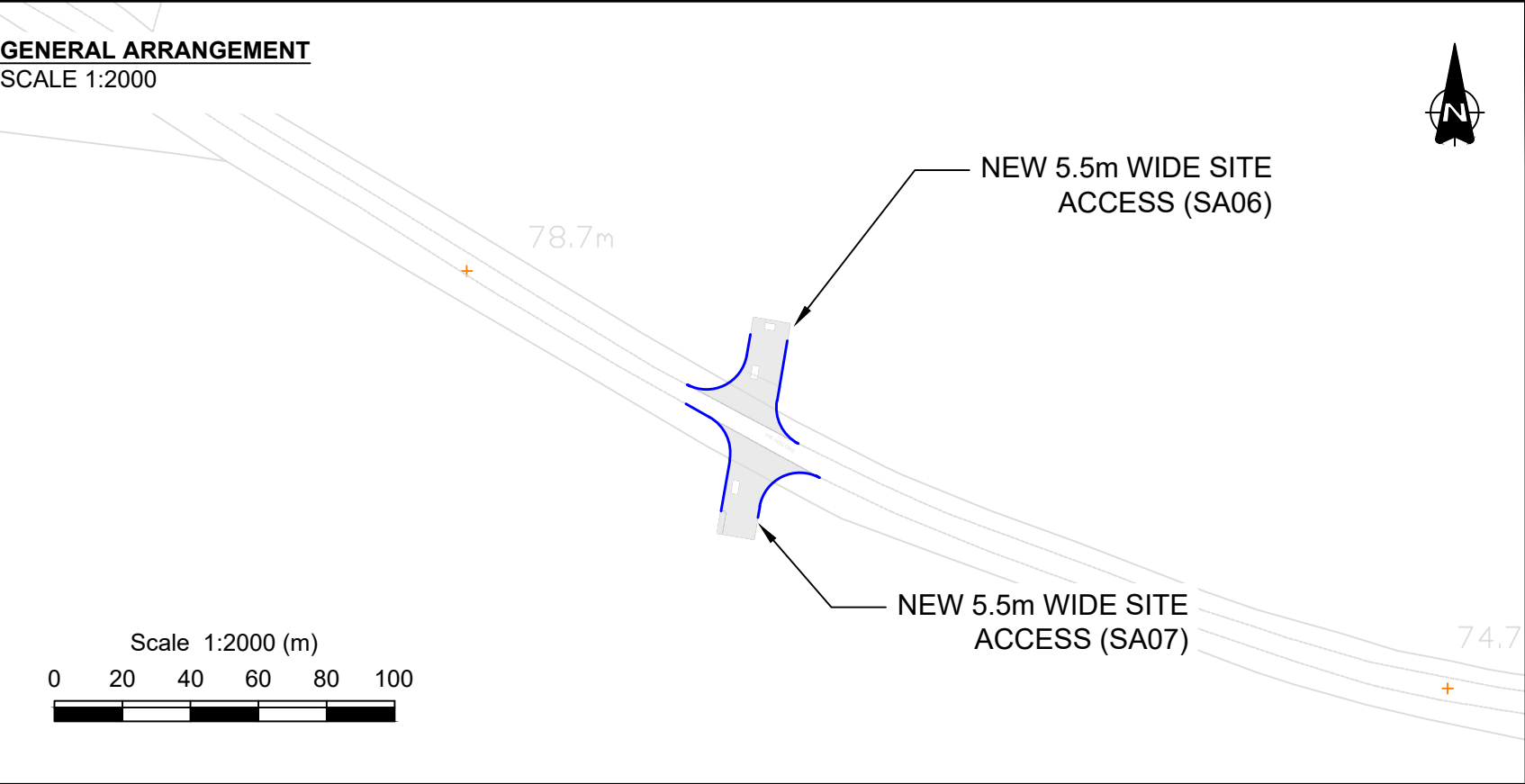
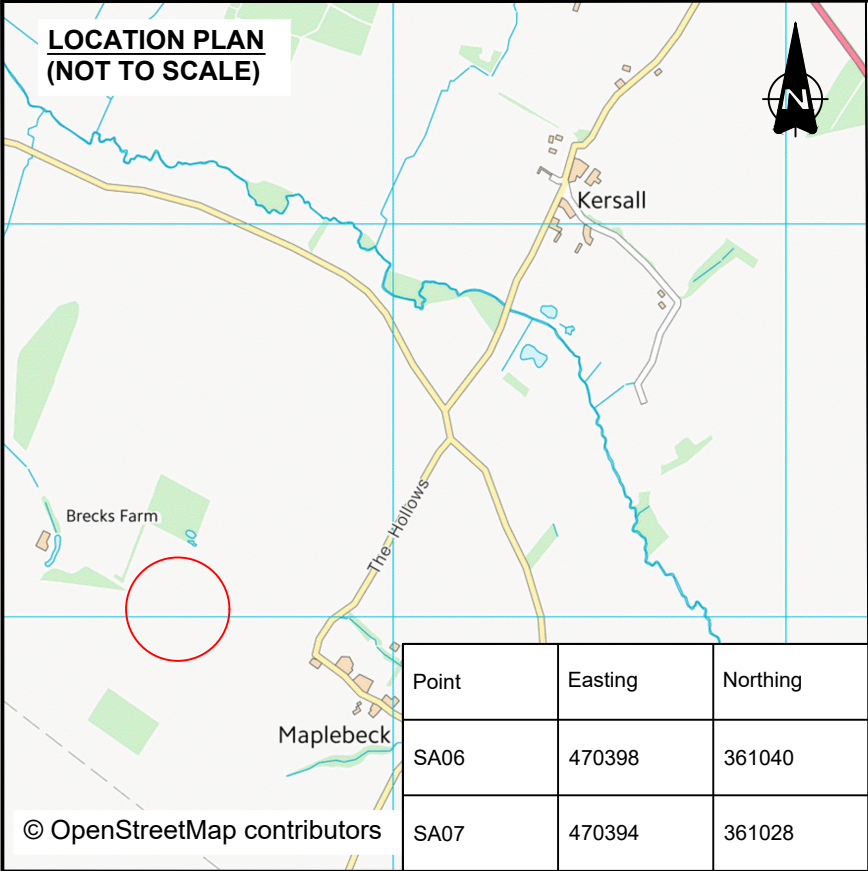
Project
GREAT NORTH ROAD SOLAR FARM
AND BIODIVERSITY PARK

Title
PROPOSED SITE ACCESS
SA04 & SA05

Drawn FW Checked JH Approved SE

Original dwg. size A3 Date 16.05.25 Scale AS INDICATED

Drawing Status INFORMATION Drawing Number 23D07-SK118 Rev.



NOTES

- Do not scale from this drawing.
- All dimensions are in metres unless otherwise stated.
- This drawing is for planning purposes only.

KEY

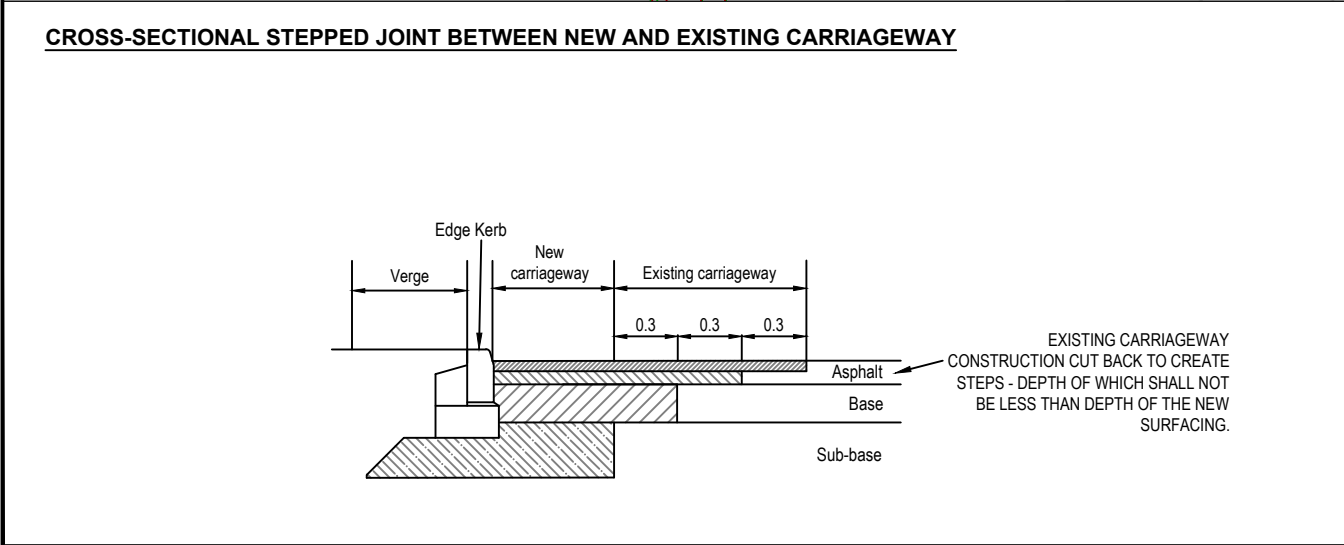
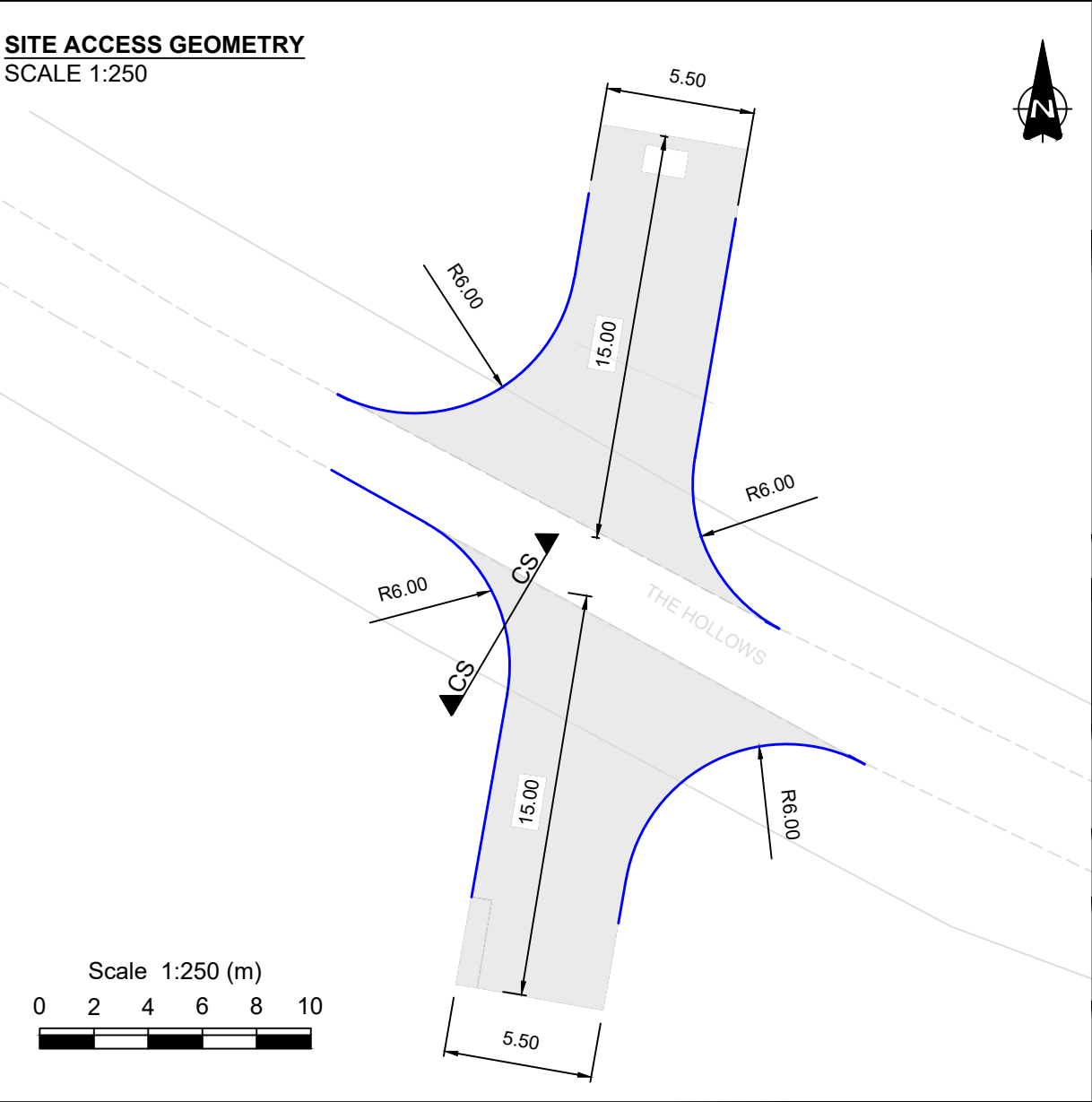
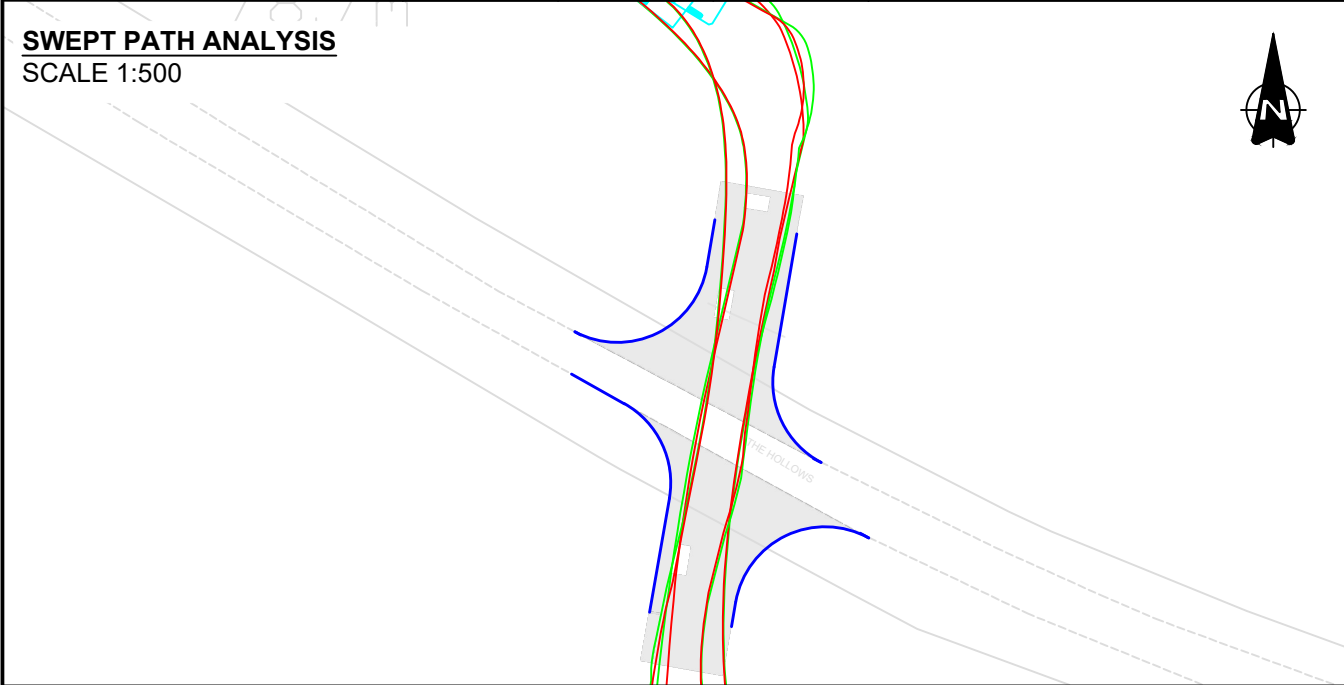
- Proposed Kerblines
- Proposed road construction

OS MasterMap: Reproduced from Ordnance Survey digital map data © Crown Copyright 2023. All rights reserved. Licence number 100066882.

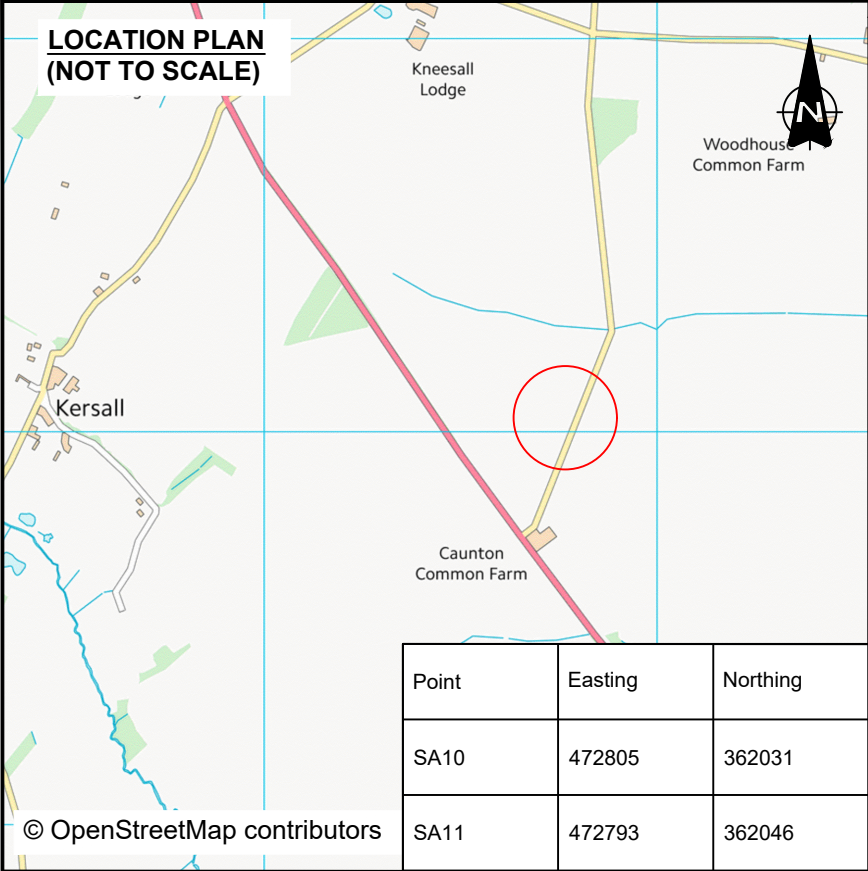
VEHICLES USED FOR SWEEP PATHS

FTA Design Articulated Vehicle (1998)

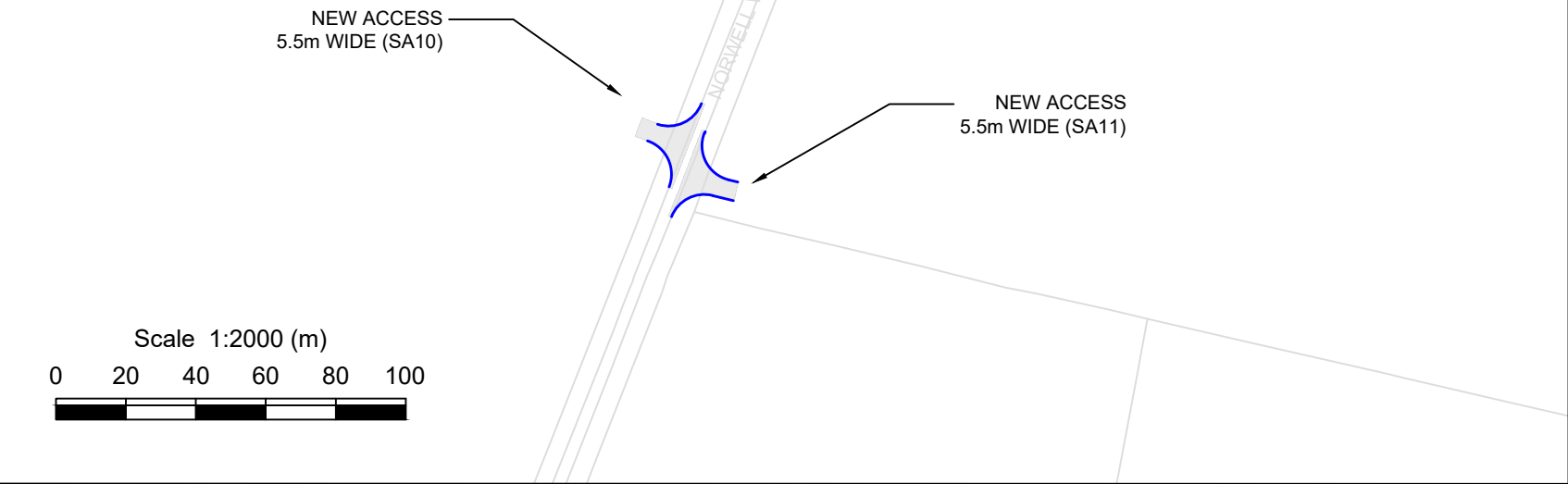
Overall Length	16.480m
Overall Width	2.550m
Overall Body Height	3.870m
Min Body Ground Clearance	0.515m
Max Track Width	2.470m



Rev.	Date	Revision details	Drawn	Checked	Approved			
© This drawing is the property of SYSTRA Limited and the information can only be reproduced with their prior permission.								
<div><div>SYSTRA</div><div></div></div>								
Milburn House, Dean Street, Newcastle upon Tyne, NE1 1LE			T 0191 249 3816 E uk_newcastle@systra.com					
Client								
ELEMENTS GREEN TRENT LTD.								
Project								
GREAT NORTH ROAD SOLAR FARM AND BIODIVERSITY PARK								
Title								
PROPOSED SITE ACCESS SA06 & SA07								
Drawn FW		Checked JH		Approved SE				
Original dwg. size A3		Date 16.05.25		Scale AS INDICATED				
Drawing Status INFORMATION			Drawing Number 23D07-SK119					
Rev.								



GENERAL ARRANGEMENT
SCALE 1:2000

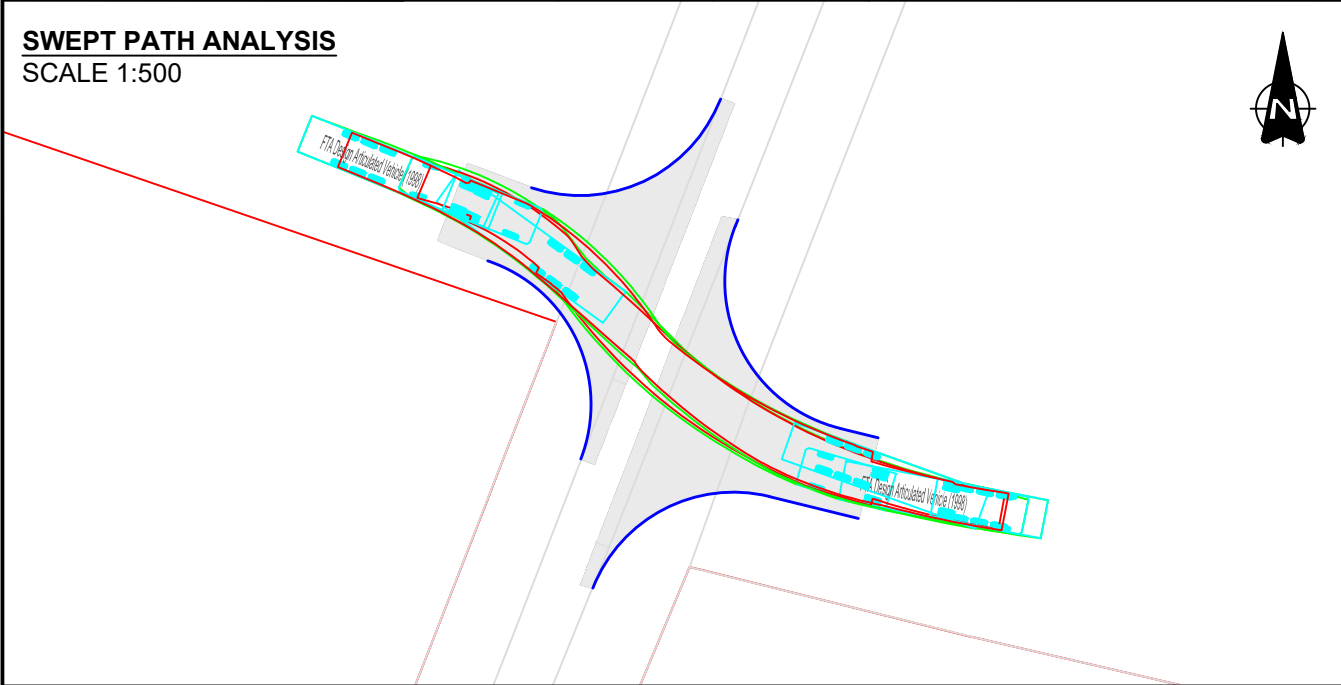


- NOTES**
- Do not scale from this drawing.
 - All dimensions are in metres unless otherwise stated.
 - This drawing is for planning purposes only.

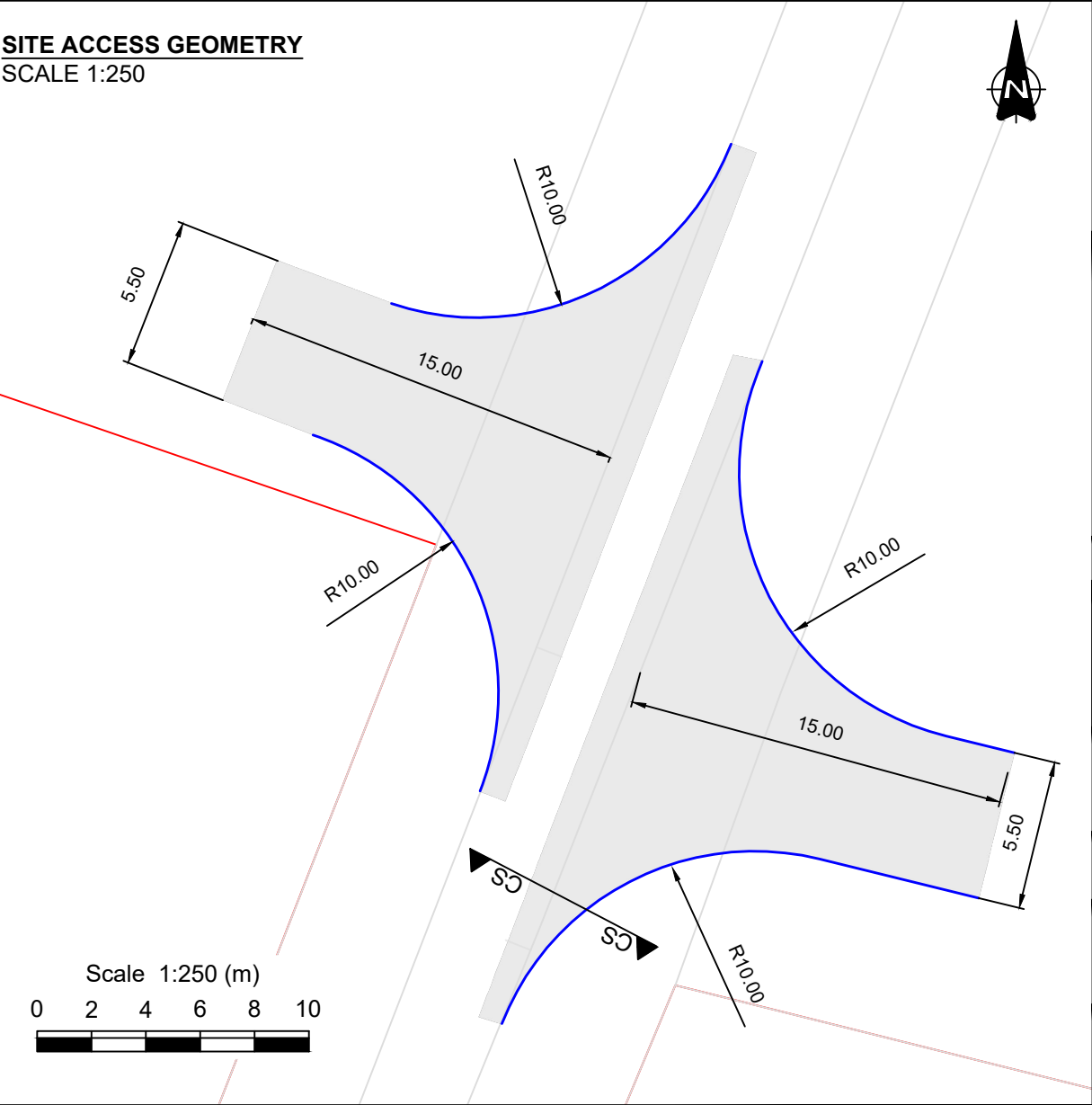
- KEY**
- Proposed Kerbline
 - Order Limits
 - Proposed road construction

OS MasterMap: Reproduced from Ordnance Survey digital map data © Crown Copyright 2023. All rights reserved. Licence number 100066882.

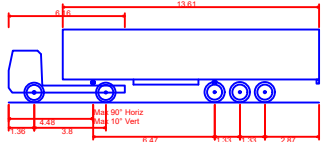
SWEPT PATH ANALYSIS
SCALE 1:500



SITE ACCESS GEOMETRY
SCALE 1:250

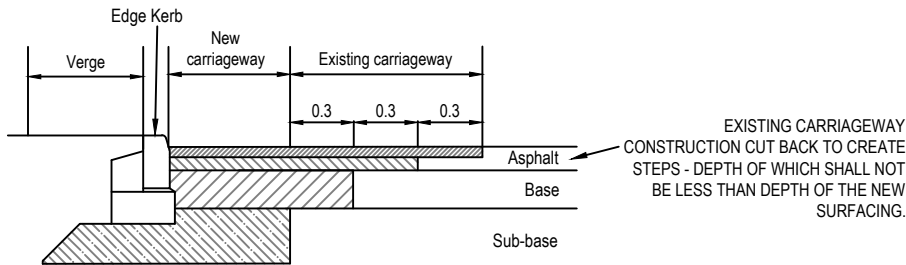


VEHICLES USED FOR SWEEP PATHS



FTA Design Articulated Vehicle (1998)
Overall Length 16.480m
Overall Width 2.550m
Overall Body Height 3.870m
Min Body Ground Clearance 0.515m
Max Track Width 2.470m

CROSS-SECTIONAL STEPPED JOINT BETWEEN NEW AND EXISTING CARRIAGEWAY



Rev.	Date	Revision details	Drawn	Checked	Approved

© This drawing is the property of SYSTRA Limited and the information can only be reproduced with their prior permission.



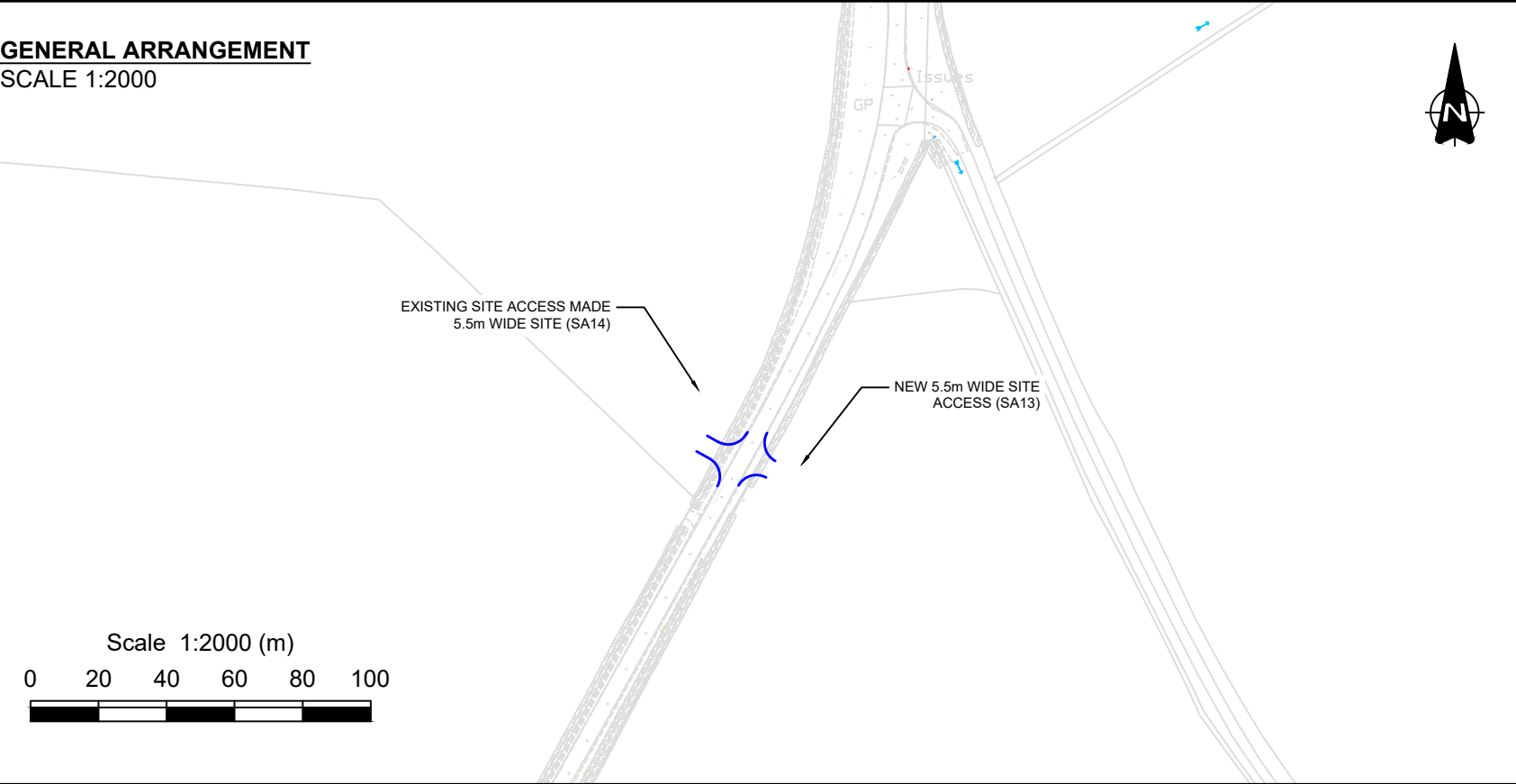
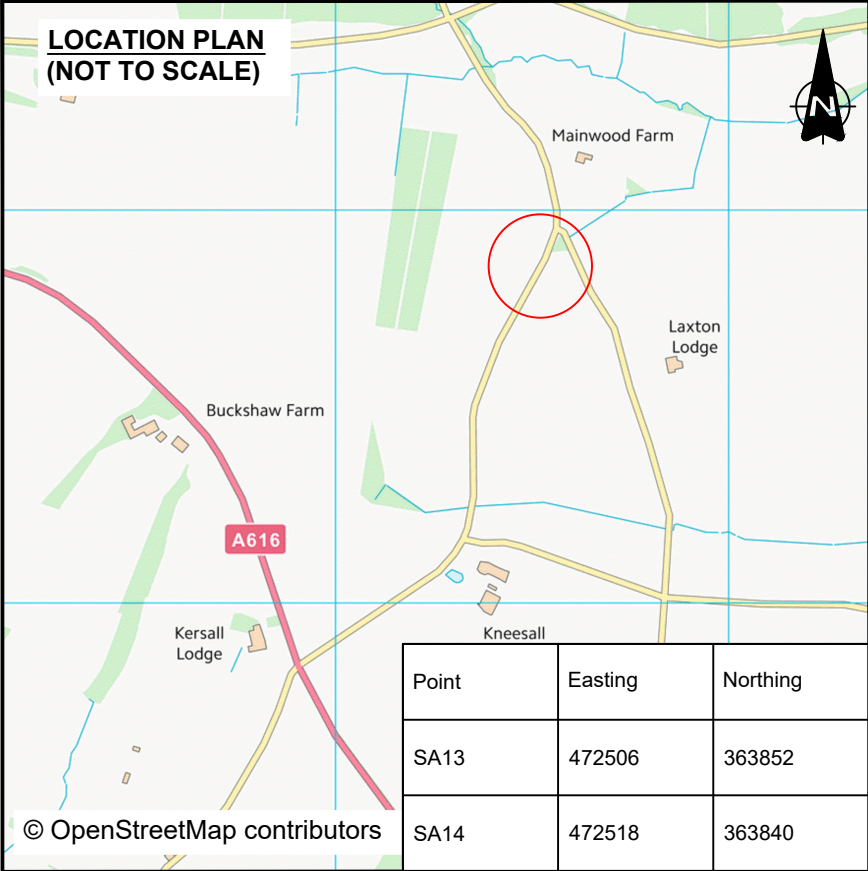
Milburn House,
Dean Street,
Newcastle upon Tyne,
NE1 1LE
T 0191 249 3816
E uk_newcastle@systra.com

Client
ELEMENTS GREEN TRENT LTD.

Project
GREAT NORTH ROAD SOLAR FARM
AND BIODIVERSITY PARK

Title
PROPOSED SITE ACCESS
SA10 & SA11

Drawn FW	Checked JH	Approved SE
Original dwg. size A3	Date 16.05.25	Scale AS INDICATED
Drawing Status INFORMATION	Drawing Number 23D07-SK120	Rev.



NOTES

- Do not scale from this drawing.
- All dimensions are in metres unless otherwise stated.
- This drawing is for planning purposes only.

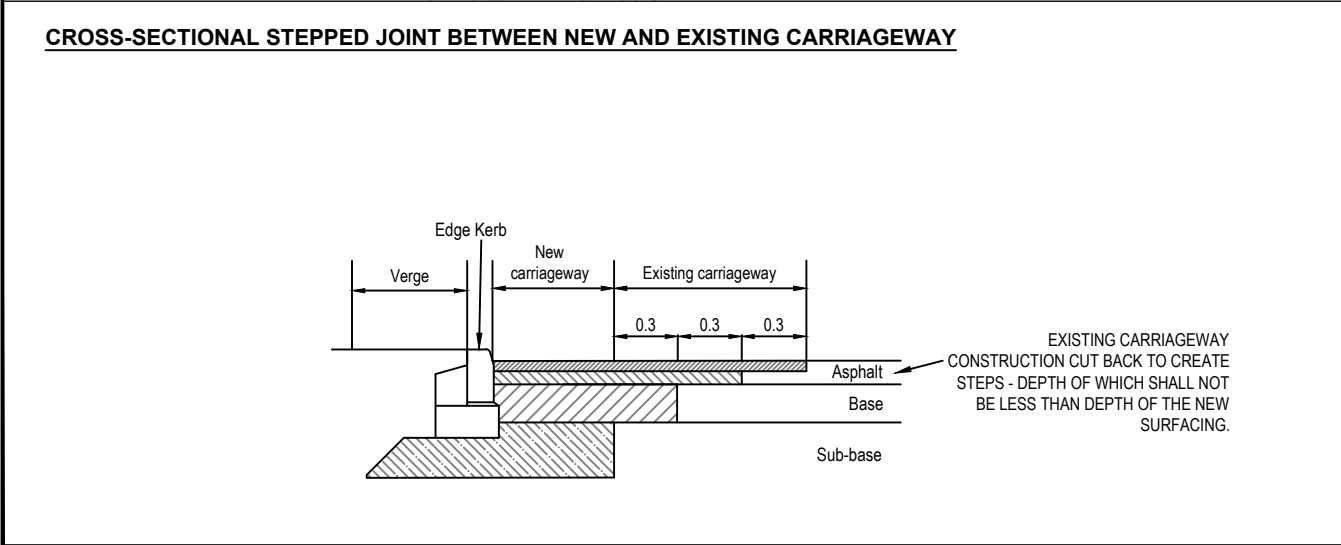
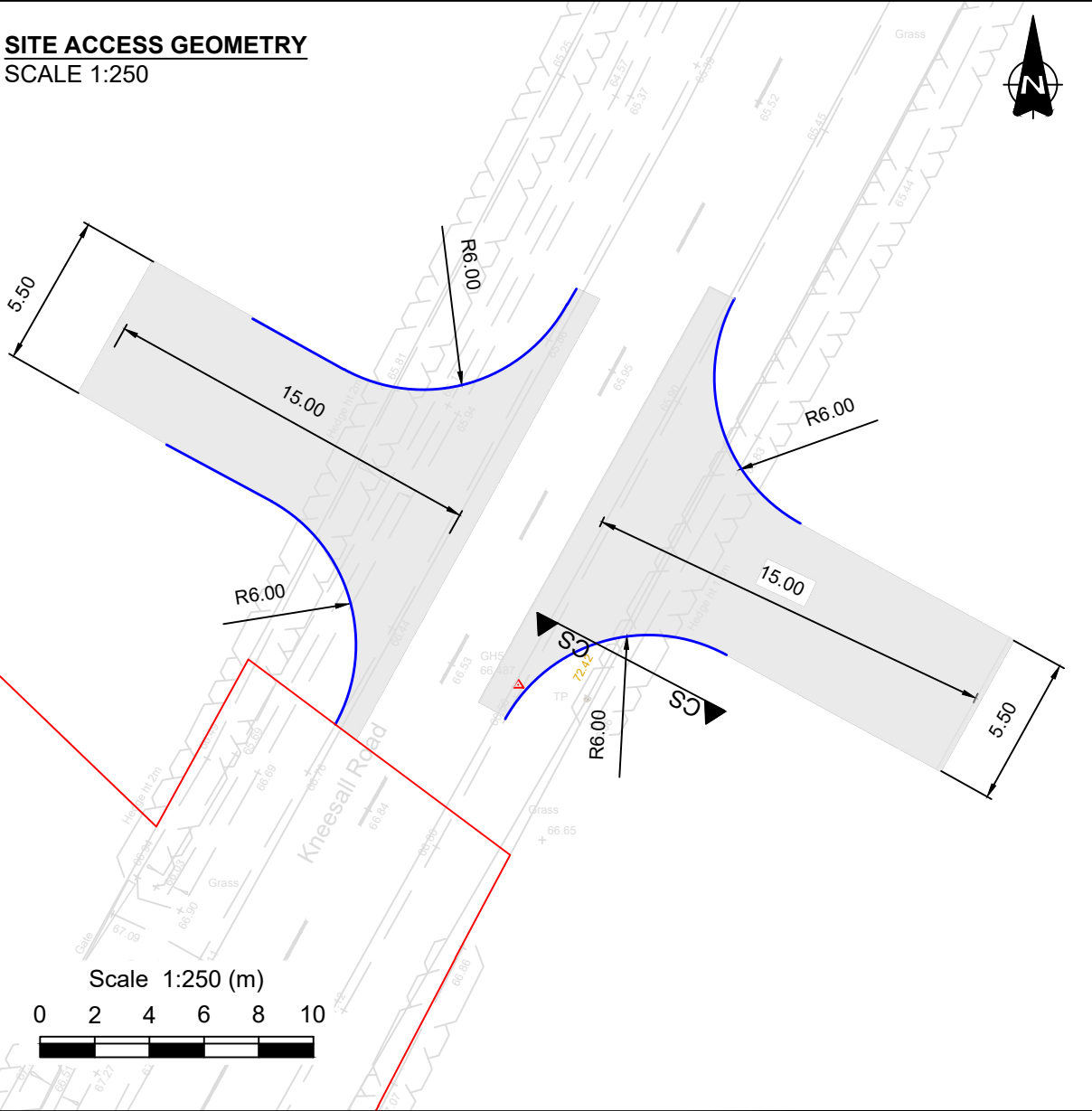
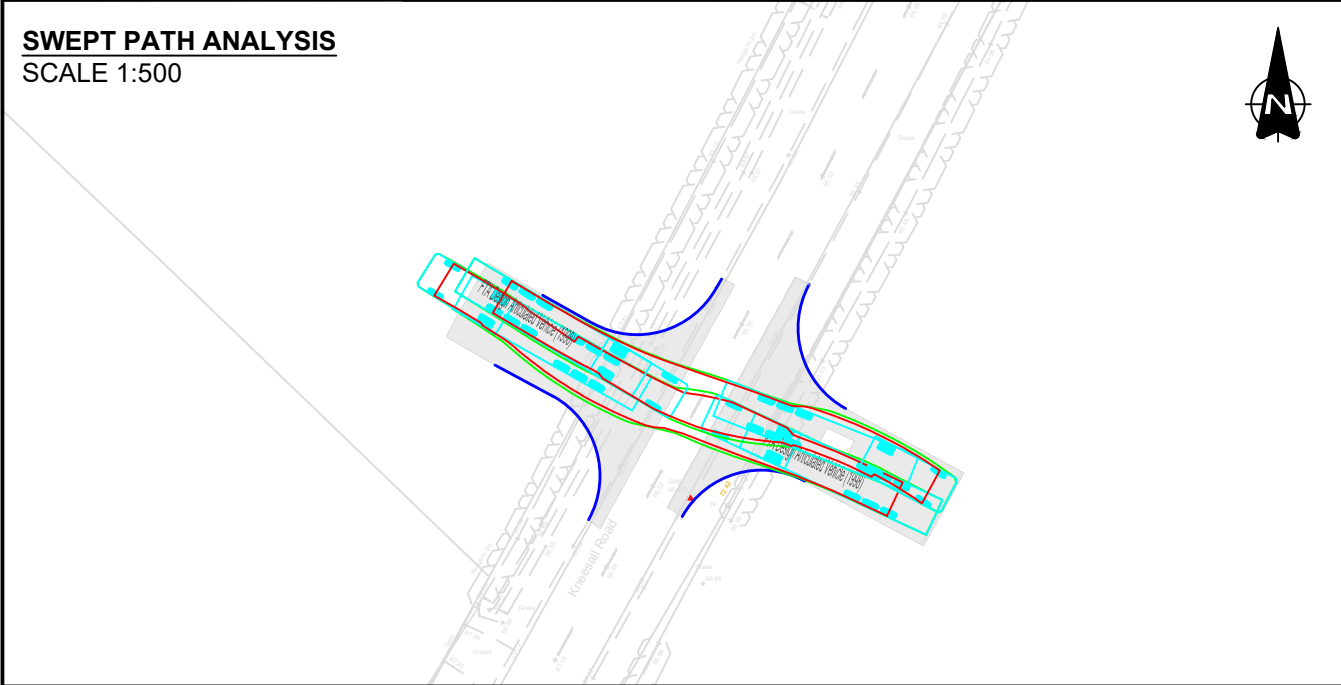
KEY

- Proposed Kerbline
- Order Limits
- Proposed road construction

OS MasterMap: Reproduced from Ordnance Survey digital map data © Crown Copyright 2023. All rights reserved. Licence number 100066882.

VEHICLES USED FOR SWEEP PATHS

FTA Design Articulated Vehicle (1998)
Overall Length 16.480m
Overall Width 2.550m
Overall Body Height 3.870m
Min Body Ground Clearance 0.515m
Max Track Width 2.470m



SYSTRA

Milburn House,
Dean Street,
Newcastle upon Tyne,
NE1 1LE

T 0191 249 3816
E uk_newcastle@systra.com

Client

ELEMENTS GREEN TRENT LTD.

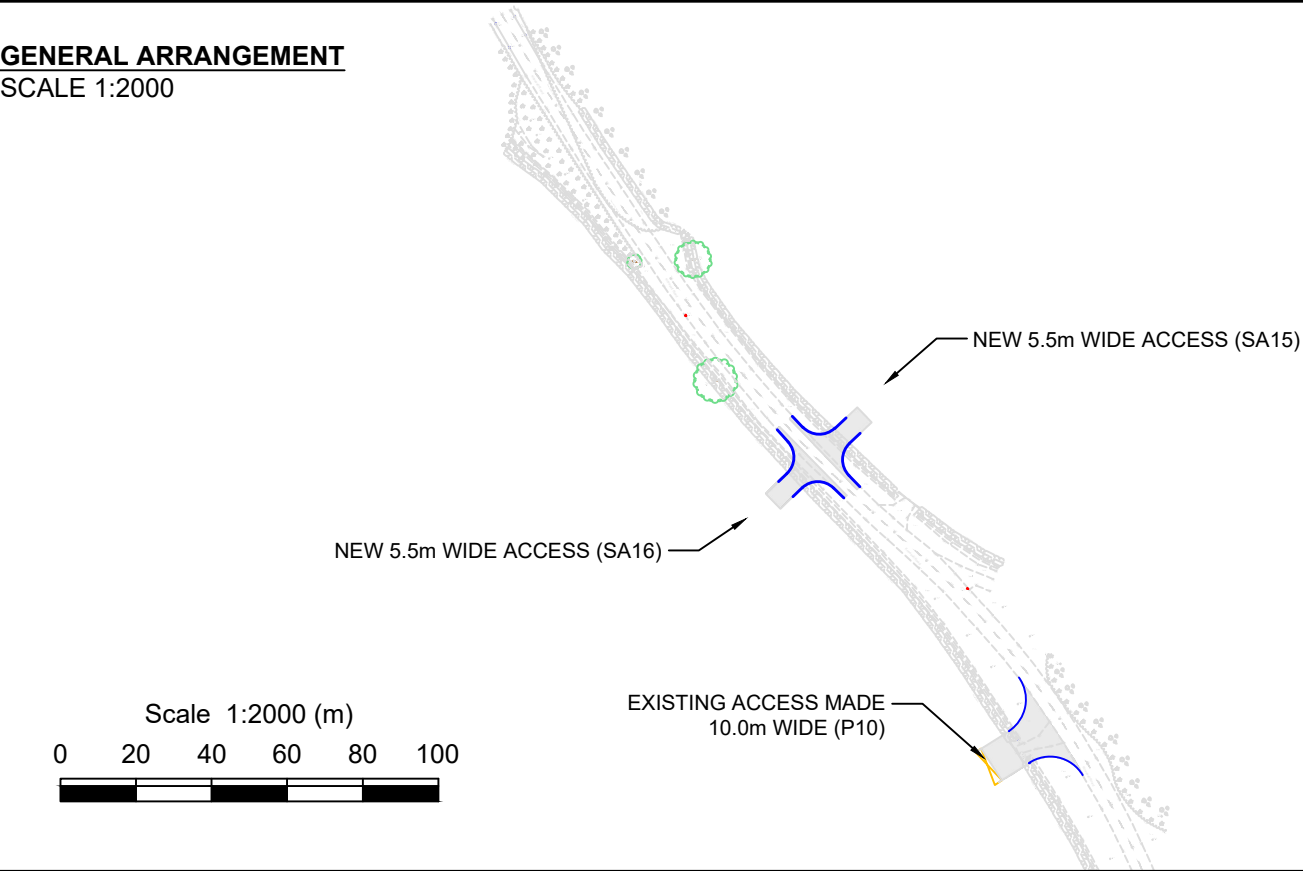
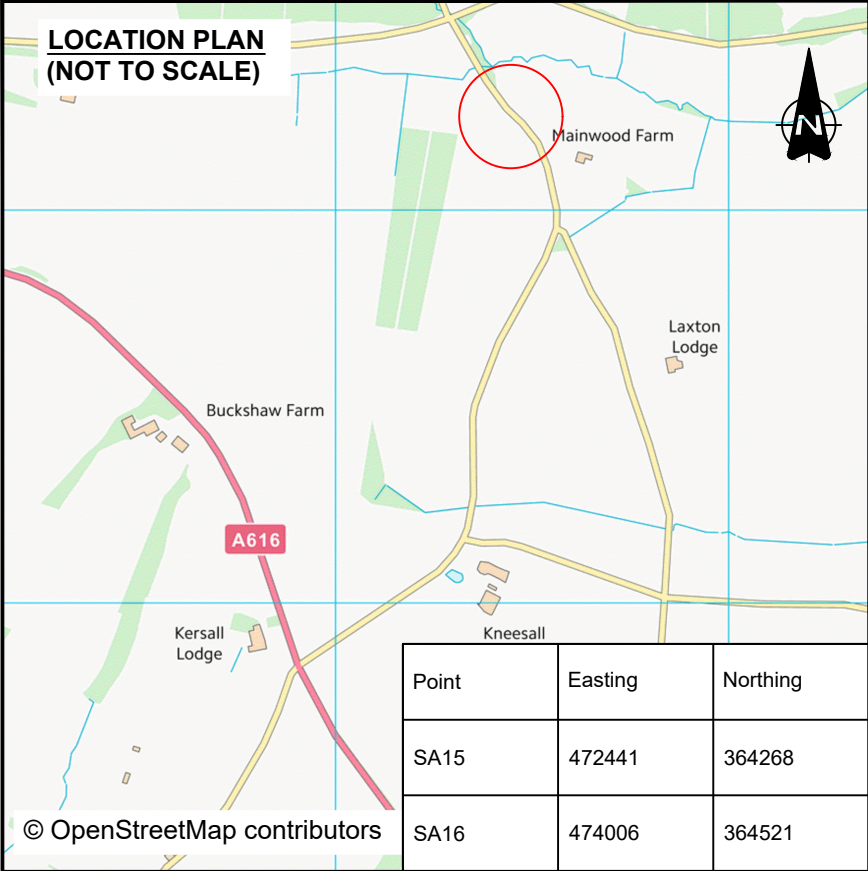
Project

GREAT NORTH ROAD SOLAR FARM
AND BIODIVERSITY PARK

Title

PROPOSED SITE ACCESS
SA13 & SA14

Drawn	Checked	Approved
FW	JH	SE
Original dwg. size	Date	Scale
A3	16.05.25	AS INDICATED
Drawing Status	Drawing Number	Rev.
INFORMATION	23D07-SK121	



NOTES

- Do not scale from this drawing.
- All dimensions are in metres unless otherwise stated.
- This drawing is for planning purposes only.

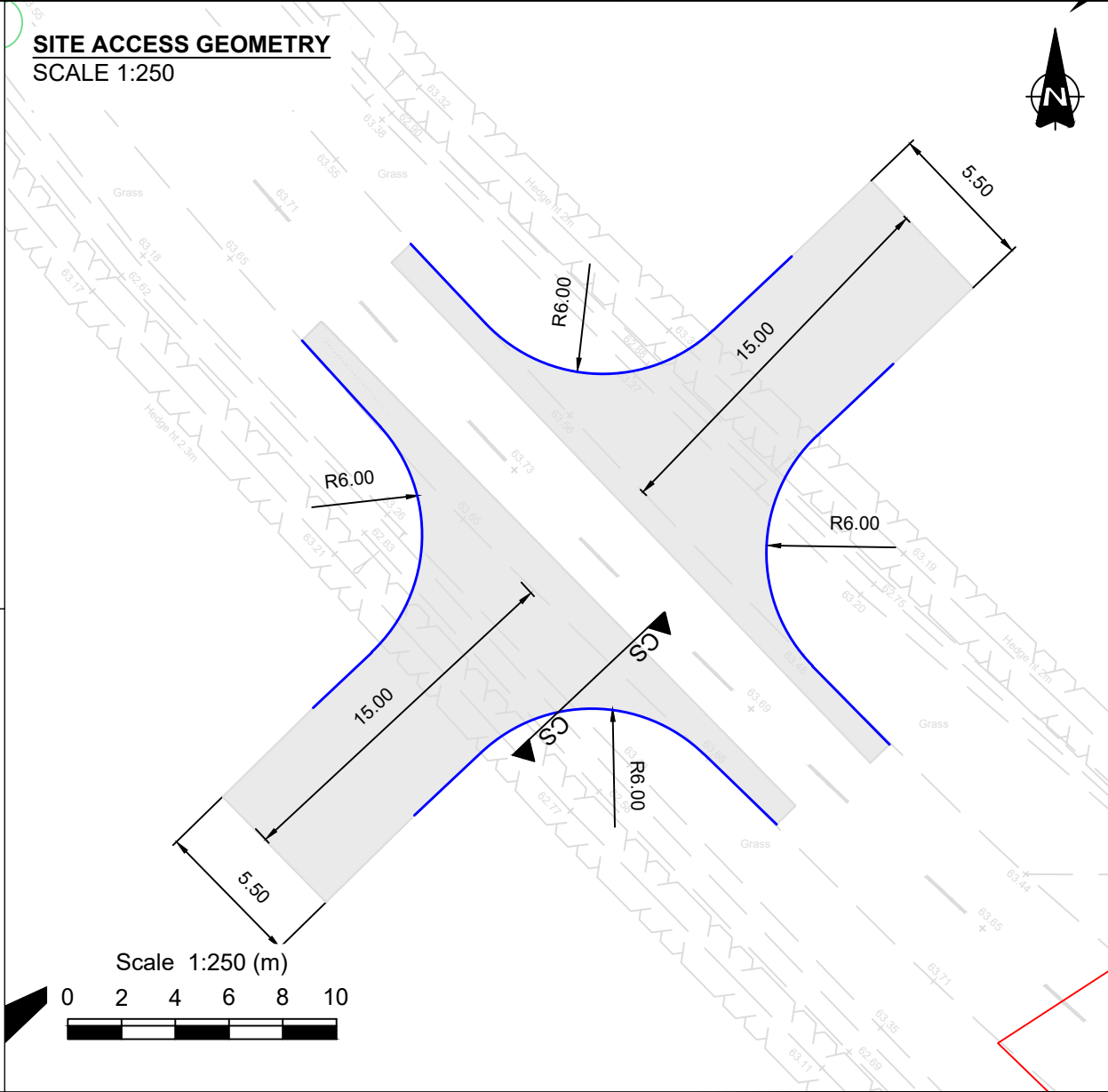
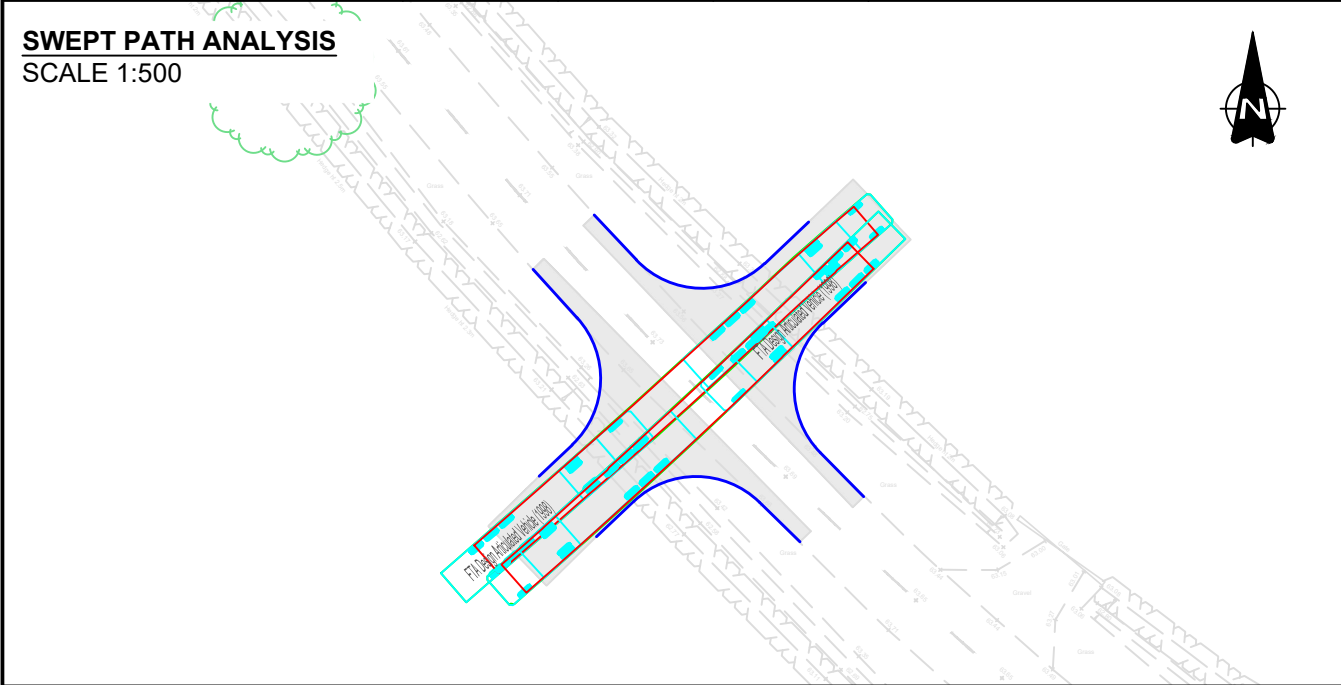
KEY

- Proposed Kerbline
- Order Limits
- Proposed road construction

OS MasterMap: Reproduced from Ordnance Survey digital map data © Crown Copyright 2023. All rights reserved. Licence number 100066882.

VEHICLES USED FOR SWEEP PATHS

FTA Design Articulated Vehicle (1998)
Overall Length 16.480m
Overall Width 2.550m
Overall Body Height 3.870m
Min Body Ground Clearance 0.515m
Max Track Width 2.470m



CROSS-SECTIONAL STEPPED JOINT BETWEEN NEW AND EXISTING CARRIAGEWAY

EXISTING CARRIAGEWAY CONSTRUCTION CUT BACK TO CREATE STEPS - DEPTH OF WHICH SHALL NOT BE LESS THAN DEPTH OF THE NEW SURFACING.

SYSTRA

Milburn House,
Dean Street,
Newcastle upon Tyne,
NE1 1LE

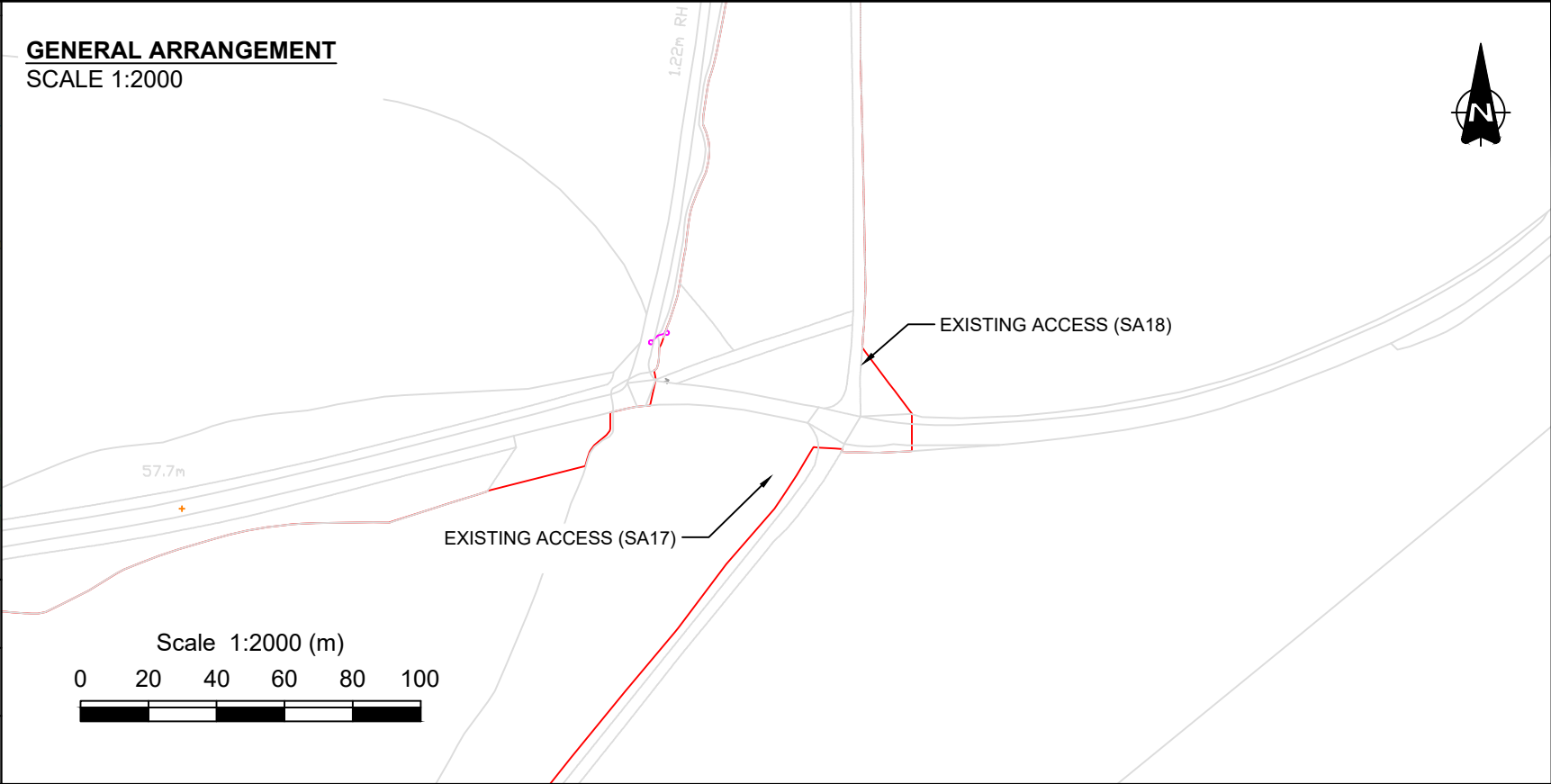
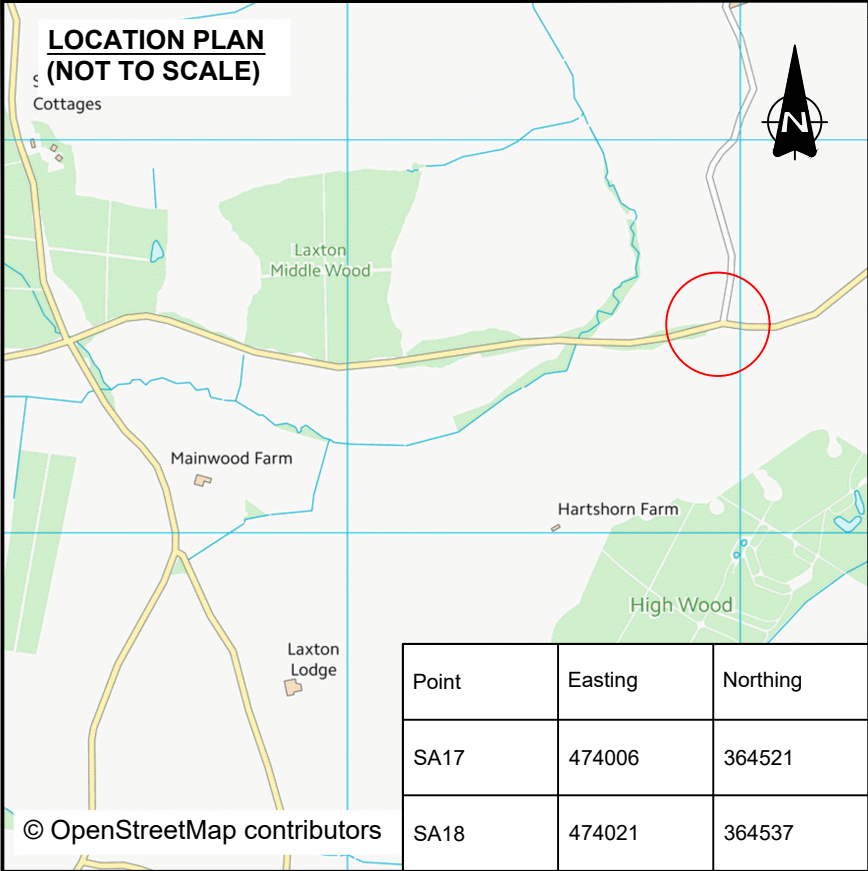
T 0191 249 3816
E uk_newcastle@sysstra.com

Client
ELEMENTS GREEN TRENT LTD.

Project
GREAT NORTH ROAD SOLAR FARM
AND BIODIVERSITY PARK

Title
PROPOSED SITE ACCESS
SA15 & SA16

Drawn	FW	Checked	JH	Approved	SE
Original dwg. size	A3	Date	16.05.25	Scale	AS INDICATED
Drawing Status	INFORMATION	Drawing Number	23D07-SK122	Rev.	



NOTES

1. Do not scale from this drawing.

2. All dimensions are in metres unless otherwise stated.

3. This drawing is for planning purposes only.

KEY

Order Limits

OS MasterMap: Reproduced from Ordnance Survey digital map data © Crown Copyright 2023. All rights reserved. Licence number 100066882.



VEHICLES USED FOR SWEEP PATHS

FTA Design Articulated Vehicle (1998)
Overall Length 16.48m
Overall Width 2.550m
Overall Body Height 3.870m
Min Body Ground Clearance 0.515m
Max Track Width 2.470m

Rev.	Date	Revision details	Drawn	Checked	Approved

© This drawing is the property of SYSTRA Limited and the information can only be reproduced with their prior permission.

SYSTRA

Milburn House,
Dean Street,
Newcastle upon Tyne,
NE1 1LE

T 0191 249 3816

E uk_newcastle@systra.com

Client

ELEMENTS GREEN TRENT LTD.

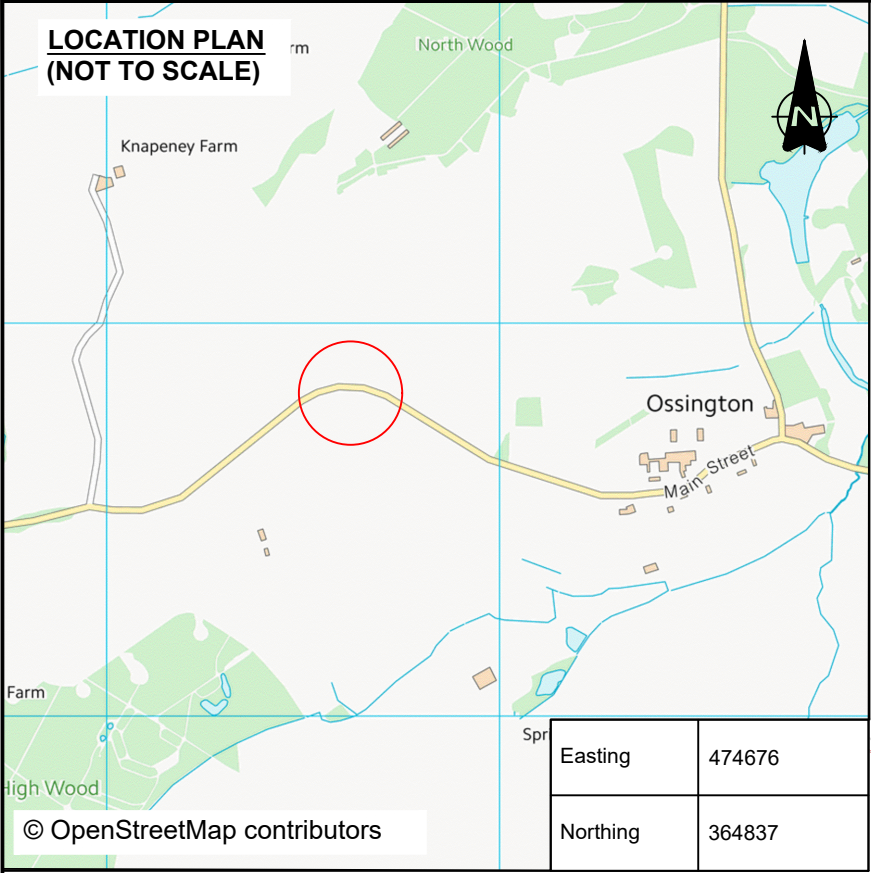
Project

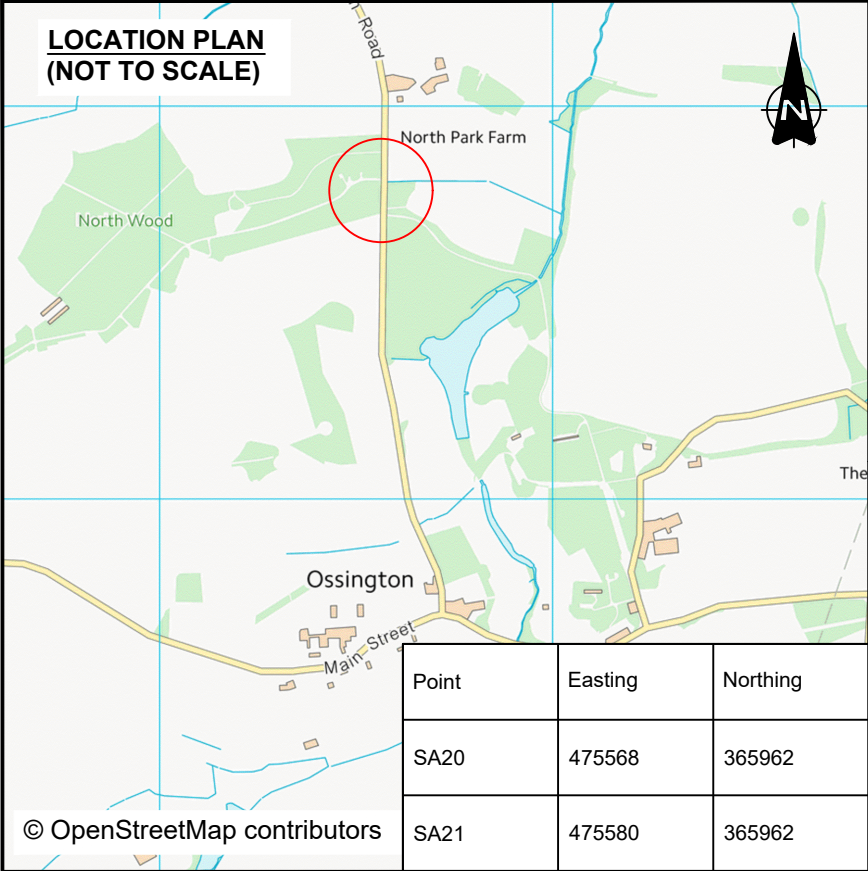
GREAT NORTH ROAD SOLAR FARM
AND BIODIVERSITY PARK

Title

PROPOSED SITE ACCESS
SA17 & SA18

Drawn	Checked	Approved
FW	JH	SE
Original dwg. size	Date	Scale
A3	16.05.25	AS INDICATED
Drawing Status	Drawing Number	Rev.
INFORMATION	23D07-SK123	





NOTES

- Do not scale from this drawing.
- All dimensions are in metres unless otherwise stated.
- This drawing is for planning purposes only.

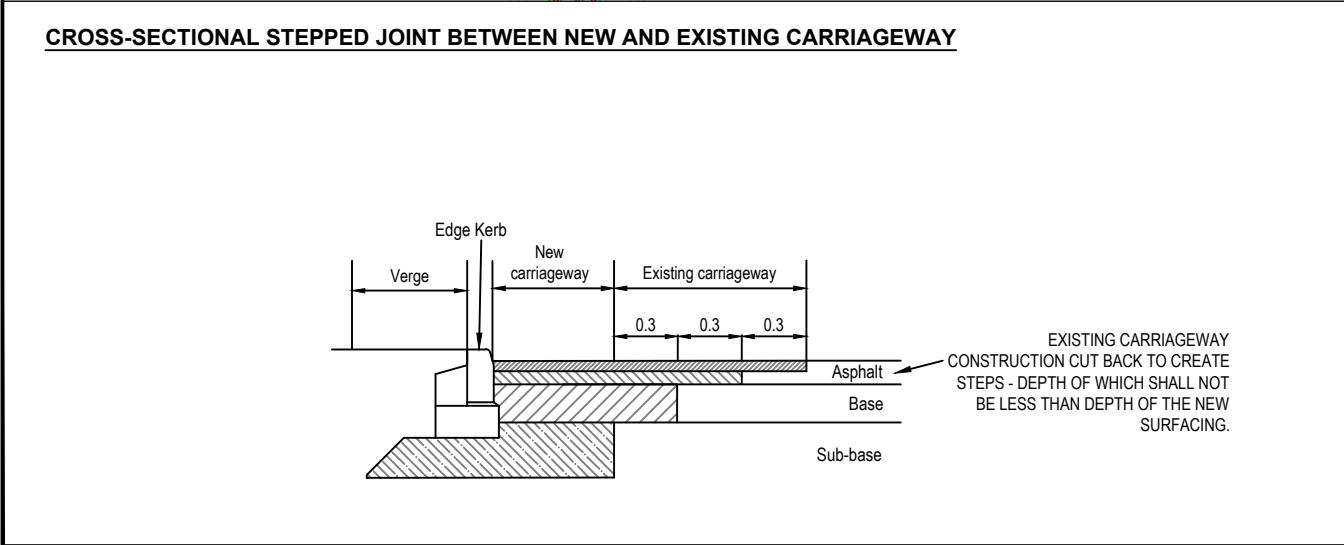
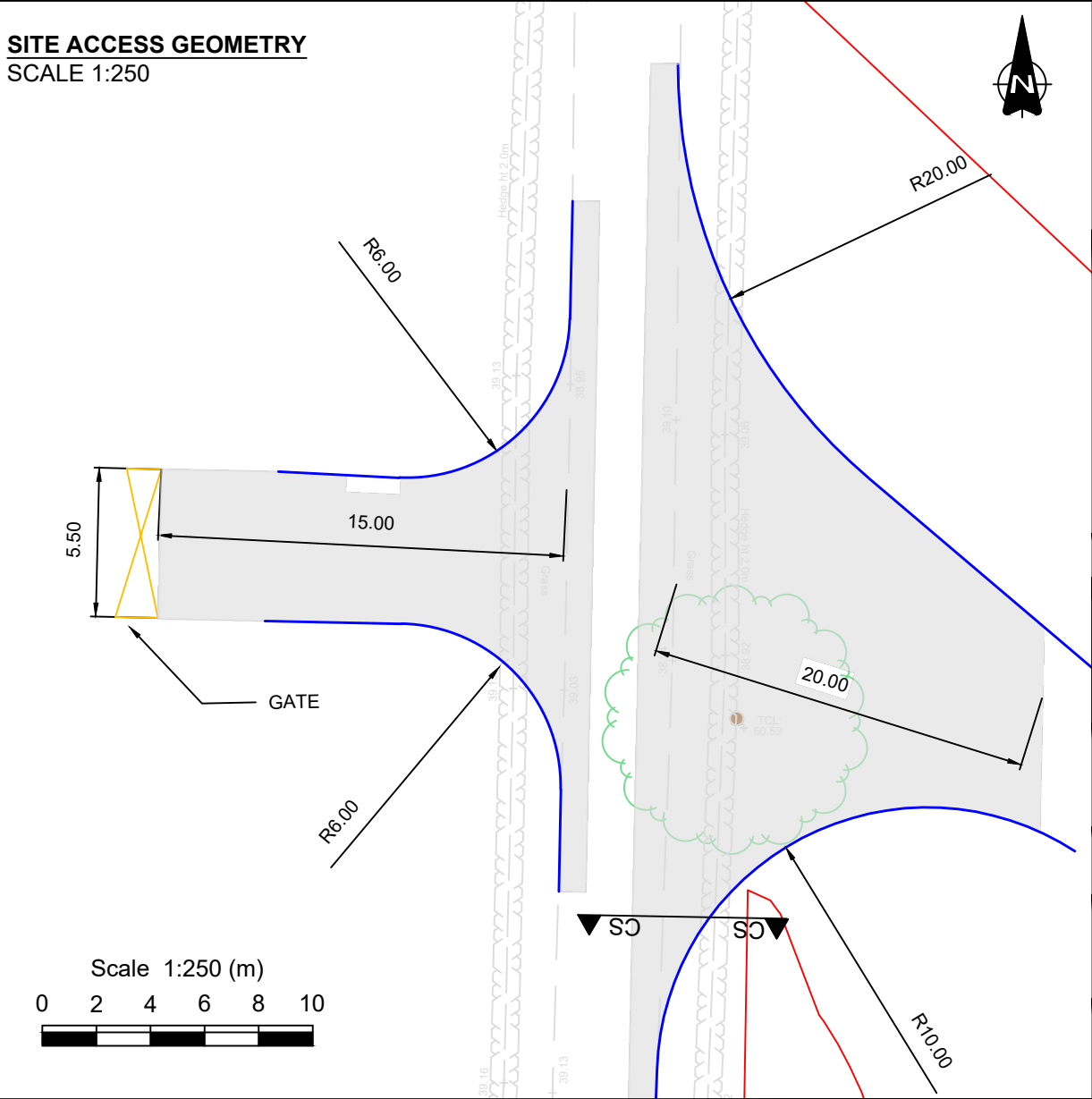
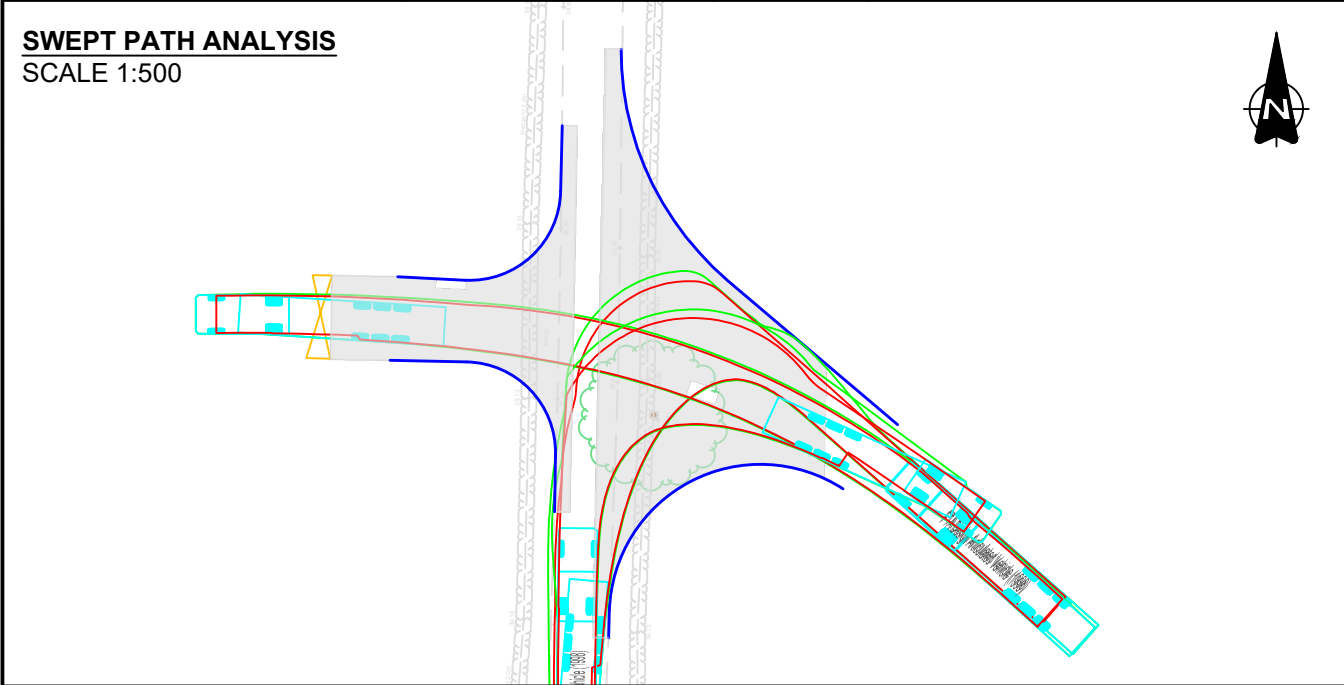
KEY

- Proposed Kerbline
- Order Limits
- Proposed road construction

OS MasterMap: Reproduced from Ordnance Survey digital map data © Crown Copyright 2023. All rights reserved. Licence number 100066882.

VEHICLES USED FOR SWEEP PATHS

FTA Design Articulated Vehicle (1998)
Overall Length 16.480m
Overall Width 2.550m
Overall Body Height 3.870m
Min Body Ground Clearance 0.515m
Max Track Width 2.470m



Rev.	Date	Revision details	Drawn	Checked	Approved

© This drawing is the property of SYSTRA Limited and the information can only be reproduced with their prior permission.

SYSTRA

Milburn House,
Dean Street,
Newcastle upon Tyne,
NE1 1LE

T 0191 249 3816
E uk_newcastle@systra.com

Client

ELEMENTS GREEN TRENT LTD.

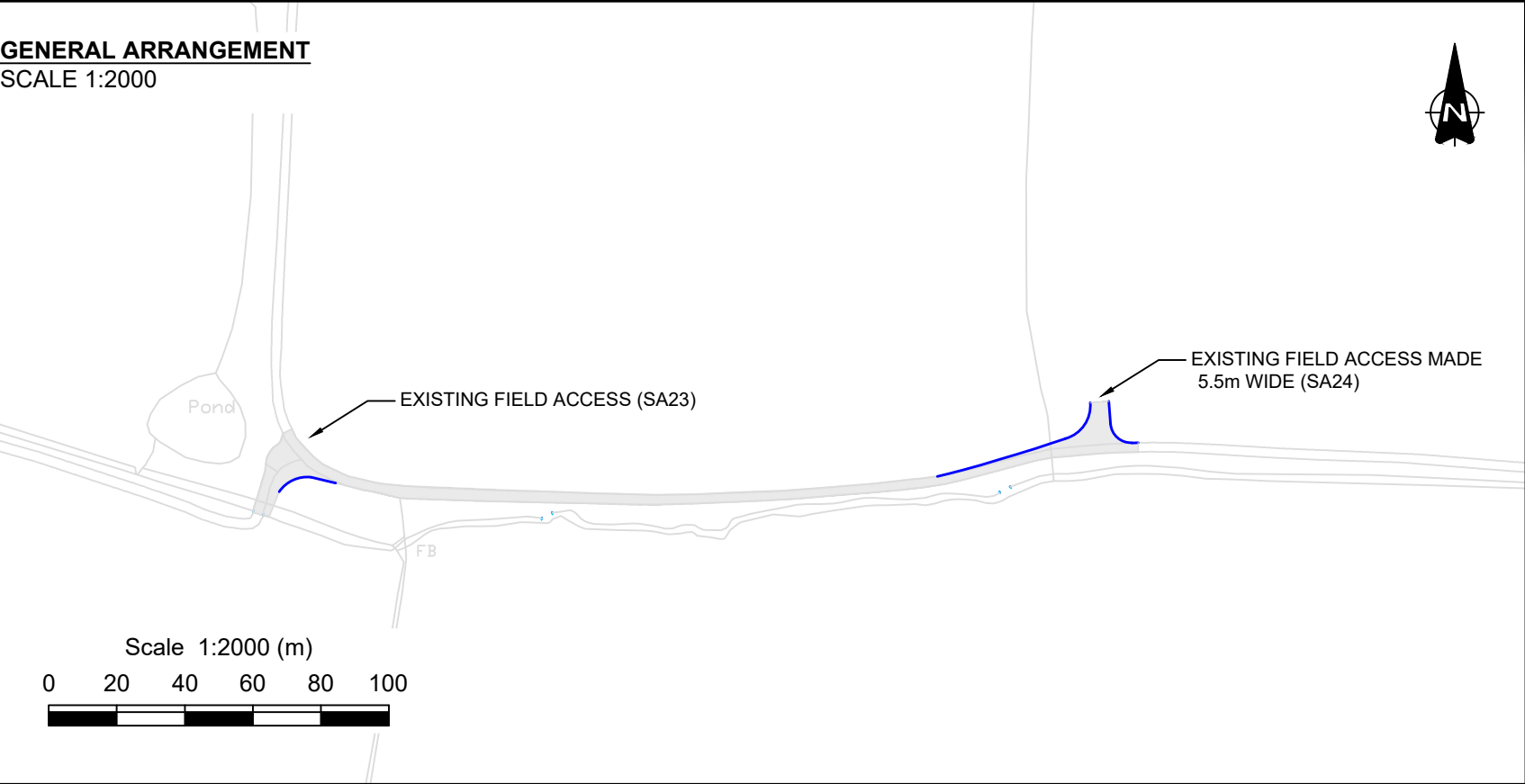
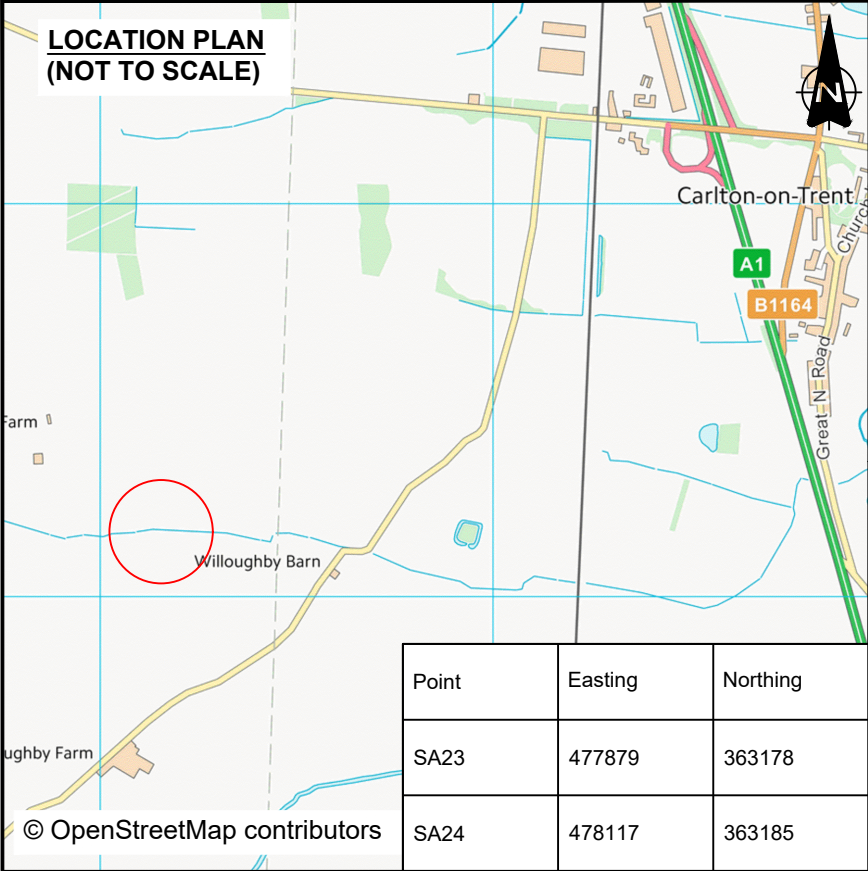
Project

GREAT NORTH ROAD SOLAR FARM
AND BIODIVERSITY PARK

Title

PROPOSED SITE ACCESS
SA20 & SA21

Drawn	FW	Checked	JH	Approved	SE
Original dsg. size	A3	Date	16.05.25	Scale	AS INDICATED
Drawing Status	INFORMATION	Drawing Number	23D07-SK125	Rev.	



NOTES

- Do not scale from this drawing.
- All dimensions are in metres unless otherwise stated.
- This drawing is for planning purposes only.

KEY

- Proposed Kerbline
- Order Limits
- Proposed road construction

OS MasterMap: Reproduced from Ordnance Survey digital map data © Crown Copyright 2023. All rights reserved. Licence number 100066882.

VEHICLES USED FOR SWEEP PATHS

FTA Design Articulated Vehicle (1998)
Overall Length 16.480m
Overall Width 2.550m
Overall Body Height 3.870m
Min Body Ground Clearance 0.515m
Max Track Width 2.470m

Rev.	Date	Revision details	Drawn	Checked	Approved

© This drawing is the property of SYSTRA Limited and the information can only be reproduced with their prior permission.

SYSTRA
Milburn House,
Dean Street,
Newcastle upon Tyne,
NE1 1LE
T 0191 249 3816
E uk_newcastle@sysstra.com

Client
ELEMENTS GREEN TRENT LTD.

Project
GREAT NORTH ROAD SOLAR FARM
AND BIODIVERSITY PARK

Title
PROPOSED SITE ACCESS
SA23 & SA24

Drawn	FW	Checked	JH	Approved	SE
Original dwg. size	A3	Date	16.05.25	Scale	AS INDICATED
Drawing Status	INFORMATION	Drawing Number	23D07-SK126	Rev.	

